

REQUEST FOR BID

PROJECT

Blanca Well Rehabilitations – Well #58 Redrill

BACKGROUND

The Bureau of Land Management (BLM) is looking to increase yields in their well gallery at Blanca Wetlands, just north of Alamosa, CO. As part of this process, BLM and Ducks Unlimited are seeking bids to redrill Well #58 (WDID 3505744) located within the Blanca Wetlands Core Complex. Well #58 has a total current depth of 580-ft. BLM and Ducks Unlimited are requesting the selected contractor to redrill and replace the existing well infrastructure and extend the total depth of the well to the bottom of Layer 3 in the confined aquifer (approximately 900-ft). The optimal production rate for Well #58 is 500 gpm.

Table 1 presents relevant information for the existing Well #58. **Appendix A** contains construction plans presenting site access, well location, infrastructure details, and construction notes/specifications.

Appendix B contains the well permit and completion report available.

Table 1 – Blanca Wells

Well Number	Well Permit	WDID	Completion Date	Lat, Long	Completion Depth (ft)	Perforated Casing Top (ft)	Casing Type	Casing Diameter (in)
58	36195-F	3505744	12/1/1964	37.534758, -105.715112	580	360	Steel	2.5

SCOPE OF WORK

1. Plugging & Abandonment the Existing Well
2. Drilling Well Hole
3. Geophysical logging
 - From this evaluation the following will be determined:
 - i. The well depth.
 - ii. Identify water bearing zones.
 - iii. Pinpointing the depth of well screen.
 - iv. Identifying depth of plain casing.
4. Furnish and install plain casing
5. Furnish and install surface casing
 - Surface casing to be installed to a depth of 100-ft.
6. Furnish and install well screen
 - Well screens to be completed with modern and efficient factory slotted casing (stainless steel, wire wrapped well screen) and properly sized gravel pack.
7. Furnish and install dielectric coupler
 - Between plain casing and stainless steel screen
8. Well Grouting

- Grouting must be completed to the bottom of plain casing.
- 9. Furnish and install gravel packing
- 10. Well Testing
- 11. Furnish and install wellhead valve
 - The wellhead valve shall be of full port design and threaded to attach to the wellhead and allow for removal.
- 12. Furnish and install pump (500 GPM)
 - Contractor to design pump for a maximum of 500 GPM. Design to be cleared through DU/BLM before purchase and installation
- 13. Well Development
- 14. Water Distribution System (see construction plans in **Appendix A** for more information)

SITE SHOWING

A site showing will be held at Blanca Wetlands on **Monday, June 29 at 2:00 pm MST**. Contractors to meet at the west entrance to Blanca Wetlands (**37.547069, - 105.729981**). See **Notice to Bidders** and **Appendix A** for a map showing the west entrance and well location.

BID & SCHEDULE

Please fill out the Bid Form document (all ten pages) including the bid tab and submit (delivery information below) by **Monday, July 13, 2026 at 1:00 pm MST**. BLM and DU will host a bid opening at the San Luis Valley BLM Field Office (1313 US-160, Monte Vista, CO 81144) beginning promptly at 1:00 pm MST on July 13, 2026.

If bid amount is over \$250,000, then:

- Mail bidding documents in sealed envelope to Thomas Parker at 2114 Midpoint Drive, Suite 1, Fort Collins, CO 80526
- or-
- Drop off bidding documents in sealed envelope to Taylor Applewhite at the San Luis Valley BLM Field Office at 1313 US-160, Monte Vista, CO 81144

If bid amount is under \$250,000, contractor can email bidding documents to Thomas Parker at tparker@ducks.org.

Below is a reference for the bid tab included in the bid form. Call or email Thomas Parker with any questions (970-692-3375, tparker@ducks.org).

Item No.	Description	Quantity	Unit	Unit Price	Total Price
1.1	Mobilization	1	LS		
1.2	Intra-Mobilization (Mobilization Discount if both Well 58 and Well 12 redrills are won)	1	LS		
2	Site Preparation	1	LS		
WATER WELL DRILLING					
3.1	Plugging & Abandoning Existing Well	1	EA.		
3.2	Drilling Well Hole	900	L.F.		
3.3	Geophysical Logging	1	EA.		
3.4	Furnish & Install Plain Well Casing (12" Steel)	360	L.F.		
3.5	Furnish & Install Surface Well Casing (20" Steel)	100	L.F.		
3.6	Furnish & Install Well Screen (12" Stainless Steel)	540	L.F.		
3.7	Furnish & Install Dielectric Coupler 12"	1	EA.		
3.8	Well Grouting	1	EA.		
3.9	Furnish & Install Gravel Pack	1	EA.		
3.10	Well Testing	1	EA.		
3.11	Furnish & Install Wellhead Valve	1	EA.		
3.12	Furnish & Install Pump (500 GPM)	1	EA.		
3.13	Well Development	1	EA.		
3.14	Water Distribution System	1	LS		
				TOTAL	

APPENDIX A

CONSTRUCTION PLANS



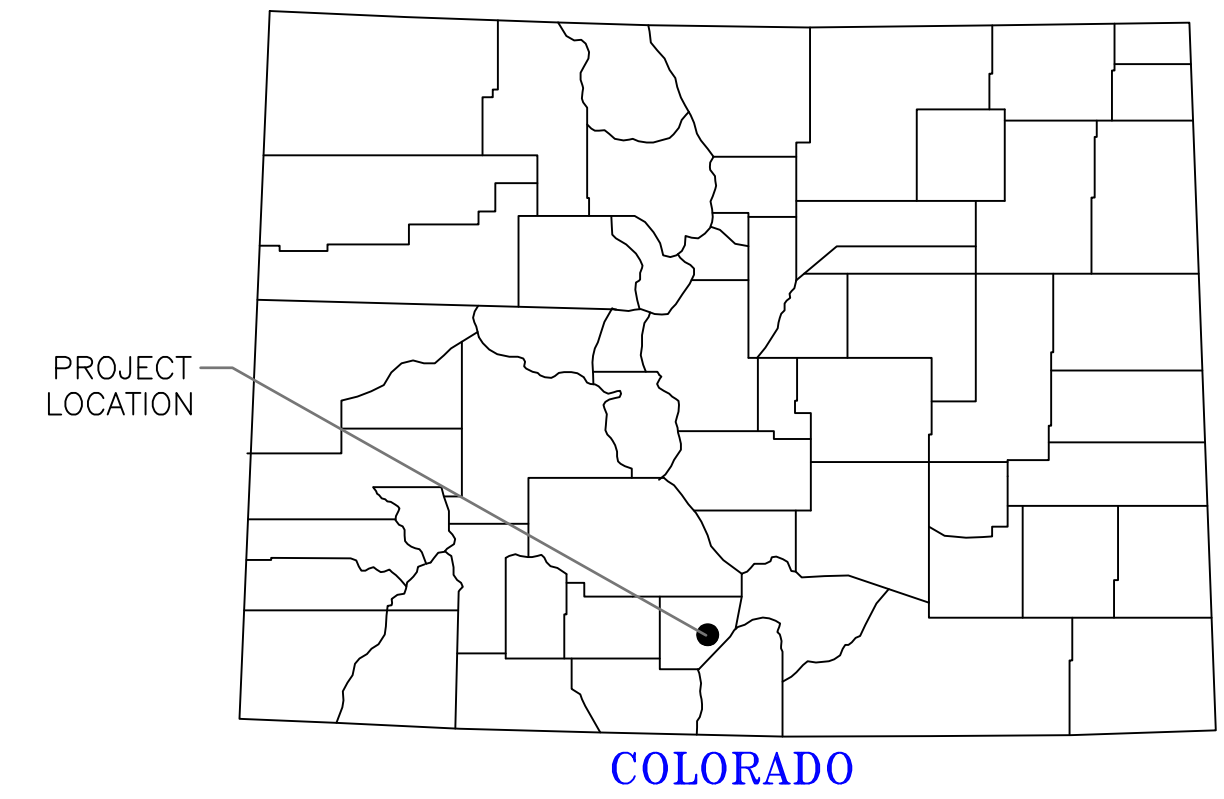
DUCKS UNLIMITED

PROJECT

BLANCA WETLANDS WELL REHABILITATION WELL 58 REDRILL CO-45-100

LOCATED IN PARTS OF
SECTION (13), TOWNSHIP (38N), RANGE (11E)
6TH P.M., ALAMOSA COUNTY, COLORADO

IN COOPERATION WITH
BLM



PLAN INDEX

- 1 TITLE PAGE & LOCATION MAP
- 2 OVERALL MAP & PHOTOS
- 3 PLAN
- 4 PLAN DETAILS
- 5 PROFILE
- 6 STRUCTURE DETAILS
- 7 NOTES

SPECIFICATIONS

- 101 GENERAL CONDITIONS
- 102 SUPPLEMENTAL CONDITIONS
- 201 MOBILIZATION
- 202 SITE PREPARATION
- 302 STRUCTURE AND CULVERT APPURTENANCES
- 303 CULVERT AND PIPE INSTALLATION
- 305 RIPRAP, REVETMENT & AGGREGATE PLACEMENT
- 313 PUMP INSTALLATION
- 314 WATER WELL DRILLING

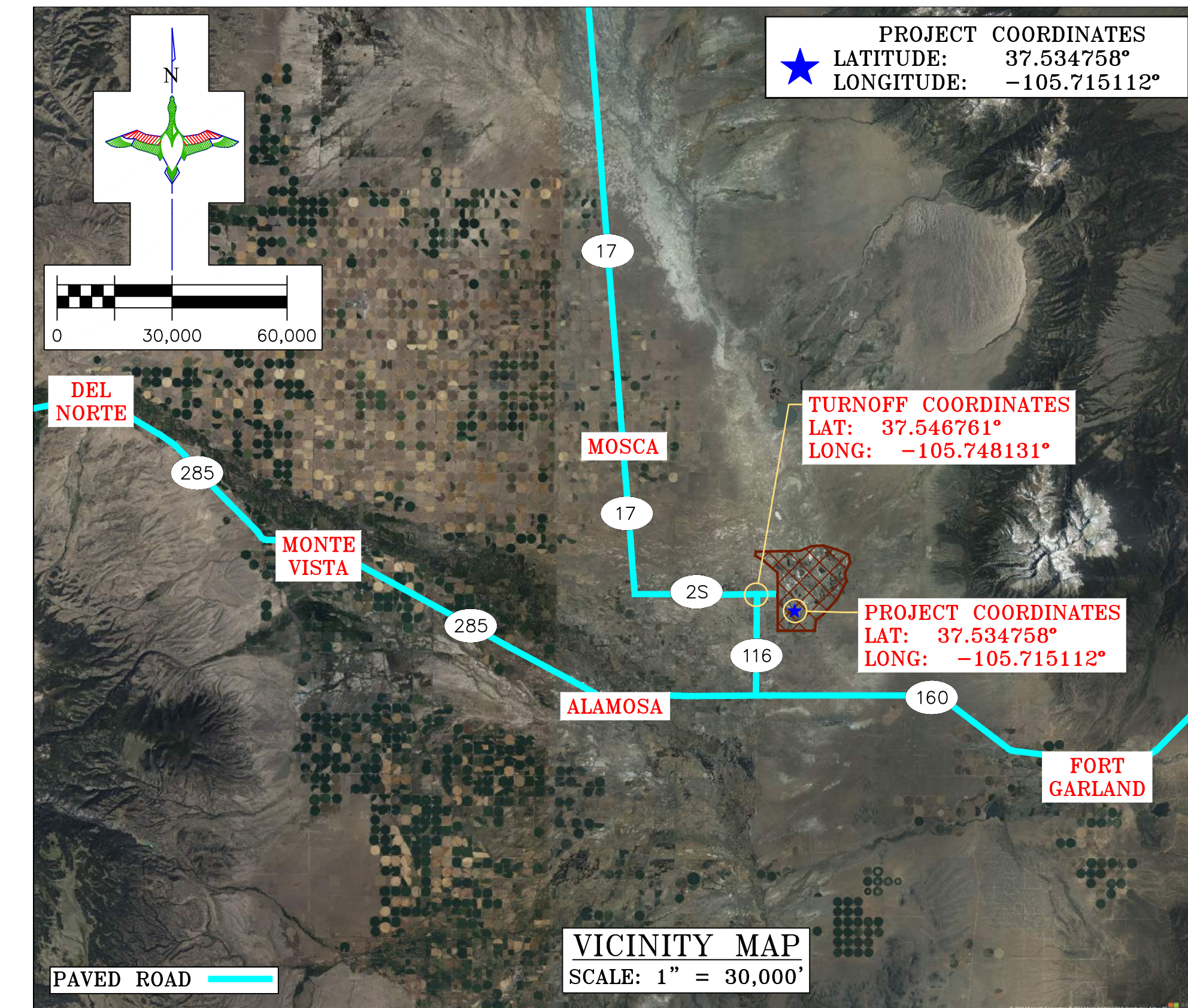
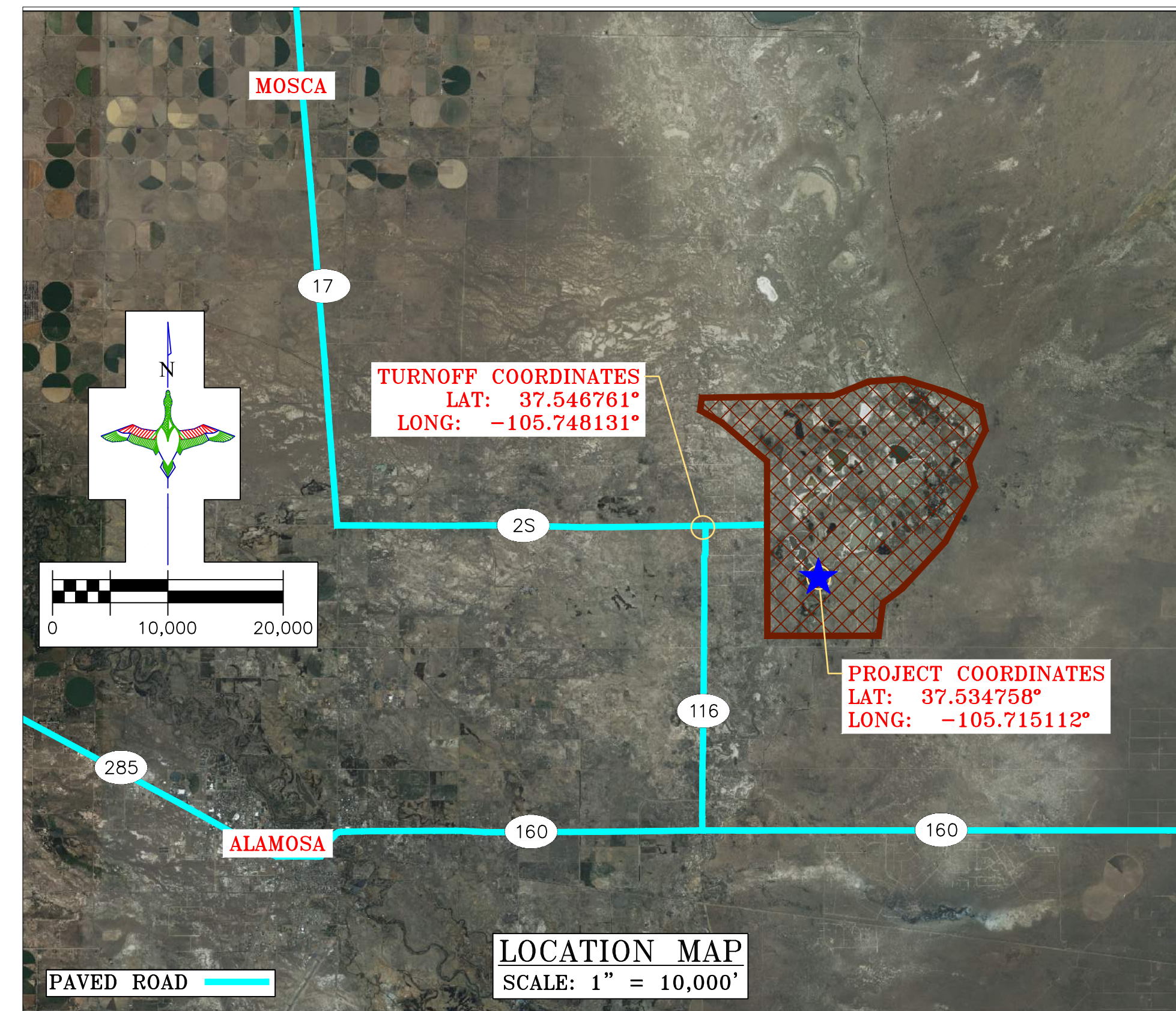
ESTIMATED QUANTITIES

- MOBILIZATION:** 1 L.S.
- SITE PREPARATION:** 1 L.S.
- WATER WELL DRILLING:**
- PLUGGING & ABANDONING EXISTING WELL 1 EA.
 - DRILLING WELL HOLE 900 L.F.-A
 - GEOPHYSICAL LOGGING 1 EA.
 - FURNISH & INSTALL PLAIN WELL CASING 360 L.F.-A
 - FURNISH & INSTALL SURFACE WELL CASING 100 L.F.-A
 - FURNISH & INSTALL WELL SCREEN 540 L.F.-A
 - FURNISH & INSTALL DIELECTRIC COUPLER 1 EA.
 - WELL GROUTING 360 L.F.-A
 - FURNISH & INSTALL GRAVEL PACK 540 L.F.-A
 - WELL TESTING 1 L.S.
 - FURNISH & INSTALL WELLHEAD VALVE 1 EA.
 - FURNISH & INSTALL PUMP (500 GPM) 1 EA.
 - WELL DEVELOPMENT 1 L.S.
- WATER DISTRIBUTION SYSTEM** 1 L.S.
- ESTIMATED MATERIALS:**
- 8"Ø PVC PIPE (SCH 40) - 600 L.F.
 - 6"Ø PVC PIPE (SCH 40) - 20 L.F.
 - 4"Ø PVC PIPE (SCH 40) - 20 L.F.
 - 90° STEEL FITTING (6"Ø) - 1 EA.
 - 90° PVC FITTING (6"Ø - SCH 40) - 1 EA.
 - 45° PVC FITTING (8"Ø - SCH 40) W/ THRUST BLOCK - 6 EA.
 - PVC TEE FITTING (8"Ø - SCH 40) W/ THRUST BLOCK - 3 EA.
 - PVC REDUCING TEE FITTING (8"Ø TO 6"Ø - SCH 40) W/ THRUST BLOCK - 1 EA.
 - PVC REDUCING TEE FITTING (8"Ø TO 1"Ø - SCH 40) W/ THRUST BLOCK - 1 EA.
 - 8" TO 4" REDUCER FITTING - 2 EA.
 - BUTTERFLY VALVE (8"Ø) - 1 EA.
 - BUTTERFLY VALVE (6"Ø) - 1 EA.
 - PVC GATE VALVE (8"Ø) - 5 EA.
 - 4" MAGMETER - 1 EA.
 - VALVE BOX - 1 EA.
 - METER BOX - 1 EA.
 - DRAIN BOX WITH 1" DRAIN PIPE AND BALL VALVE - 1 EA.
 - SPLITTER BOX #1 - 1 EA.
 - SPLITTER BOX #2 - 1 EA.
 - DU CLASS II ROCK RIPRAP - 8 C.Y.-P.

L.F.-A - PAYMENT WILL BE BASED ON ACTUAL QUANTITY EXCAVATED, FILLED, REGRADED, CLEANED OUT, OR SUPPLIED AND INSTALLED

C.Y.-P - PAYMENT WILL BE BASED ON THE PLAN QUANTITY LISTED ABOVE.

THIS MATERIAL, DATA AND INFORMATION IS THE PROPERTY OF DUCKS UNLIMITED, INC. IT MAY NOT BE USED OR REPRODUCED FOR ANY PURPOSE WITHOUT THE PRIOR WRITTEN CONSENT OF AN AUTHORIZED AGENT OF DUCKS UNLIMITED, INC. DUCKS UNLIMITED, INC. MAKES NO REPRESENTATION OR WARRANTY OF ANY KIND REGARDING THIS MATERIAL, DATA AND INFORMATION, INCLUDING, BUT NOT LIMITED TO, THE ACCURACY OF THE MATERIAL, DATA AND INFORMATION OR ITS SUITABILITY FOR ANY PURPOSE. ALL USE OF THE MATERIAL, DATA AND INFORMATION IS AT THE USER'S SOLE RISK. BY USING ANY OF THIS MATERIAL, DATA AND INFORMATION, USER AGREES THAT DUCKS UNLIMITED, INC. IS NOT RESPONSIBLE FOR THEIR USE OF THE MATERIAL, DATA AND INFORMATION OR THE RESULTS THEREOF.



"BEFORE YOU DIG"
BEFORE THE START OF CONSTRUCTION. THE OWNER OF ANY UTILITIES INVOLVED MUST BE NOTIFIED. THE EXCAVATOR/CONTRACTOR IS RESPONSIBLE FOR GIVING THIS NOTICE BY CALLING "ONE CALL OF COLORADO" AT 811. A 72 HOUR NOTIFICATION AND FULL DESCRIPTION OF LOCATION IS REQUIRED.

DU DESIGN ENGINEER:
THOMAS PARKER, P.E.
(970) 692-3375

DU CONSTRUCTION ENGINEER:
THOMAS PARKER, P.E.
(970) 692-3375



GREAT PLAINS REGIONAL OFFICE

P.E. SEAL:

DESIGNED BY: TRP
DRAWN BY: TRP
SURVEYED BY: TRP
CHECKED BY:
APPROVED BY:
APPROVED BY:

REVISION:	DATE:	BY:
1		
2		
3		
4		
5		
6		
7		
8		

PROJECT: **BLANCA WETLANDS - WELL 58 REDRILL**
SHEET TITLE: **TITLE PAGE & LOCATION MAP**

DATE: MARCH 2026
SHEET TITLE: **TITLE PAGE & LOCATION MAP**

SCALES ARE ACCURATE ON 24"X36" SHEET SIZE
DU PROJECT NUMBER: **CO-45-100**

SHEET NUMBER: **1**
SHEET 1 OF 7



NO ACCESS TO THE BLANCA WETLANDS IS ALLOWED FROM MAY 15 TO JULY 15, OF ANY YEAR. THIS IS TO AVOID DISTURBING THE NESTING WILDLIFE.

"BEFORE YOU DIG"
 BEFORE THE START OF CONSTRUCTION. THE OWNER OF ANY UTILITIES INVOLVED MUST BE NOTIFIED. THE EXCAVATOR/CONTRACTOR IS RESPONSIBLE FOR GIVING THIS NOTICE BY CALLING "ONE CALL OF COLORADO" AT 811. A 72 HOUR NOTIFICATION AND FULL DESCRIPTION OF LOCATION IS REQUIRED.



WELL 58 WELLHEAD



WELL 58 OUTLET



WELL 58 OUTLET



P.E. SEAL:

DESIGNED BY: TRP
 DRAWN BY: TRP
 SURVEYED BY: TRP
 CHECKED BY:
 APPROVED BY:
 APPROVED BY:

REVISION:	DATE:	BY:
1		
2		
3		
4		
5		
6		
7		
8		

PROJECT: **BLANCA WETLANDS - WELL 58 REDRILL**
 SHEET TITLE: **OVERALL MAP & PHOTOS**

DATE: **MARCH 2026**
 SHEET TITLE: **OVERALL MAP & PHOTOS**

SCALES ARE ACCURATE ON 24"x36" SHEET SIZE
 DU PROJECT NUMBER: **CO-45-100**

SHEET NUMBER: **2**
 SHEET 2 OF 7

THIS MATERIAL, DATA AND INFORMATION IS THE PROPERTY OF DUCKS UNLIMITED, INC. IT MAY NOT BE USED OR REPRODUCED FOR ANY PURPOSE WITHOUT THE PRIOR WRITTEN CONSENT OF AN AUTHORIZED AGENT OF DUCKS UNLIMITED, INC. DUCKS UNLIMITED, INC. MAKES NO REPRESENTATION OR WARRANTY OF ANY KIND REGARDING THIS MATERIAL, DATA AND INFORMATION, INCLUDING, BUT NOT LIMITED TO, THE ACCURACY OF THE MATERIAL, DATA AND INFORMATION OR ITS SUITABILITY FOR ANY PURPOSE. ALL USE OF THE MATERIAL, DATA AND INFORMATION IS AT THE USER'S SOLE RISK. BY USING ANY OF THIS MATERIAL, DATA AND INFORMATION, USER AGREES THAT DUCKS UNLIMITED, INC. IS NOT RESPONSIBLE FOR THEIR USE OF THE MATERIAL, DATA AND INFORMATION OR THE RESULTS THEREOF.



THIS MATERIAL, DATA AND INFORMATION IS THE PROPERTY OF DUCKS UNLIMITED, INC. IT MAY NOT BE USED OR REPRODUCED FOR ANY PURPOSE WITHOUT THE PRIOR WRITTEN CONSENT OF AN AUTHORIZED AGENT OF DUCKS UNLIMITED, INC. DUCKS UNLIMITED, INC. MAKES NO REPRESENTATION OR WARRANTY OF ANY KIND REGARDING THIS MATERIAL, DATA AND INFORMATION, INCLUDING, BUT NOT LIMITED TO, THE ACCURACY OF THE MATERIAL, DATA AND INFORMATION OR ITS SUITABILITY FOR ANY PURPOSE. ALL USE OF THE MATERIAL, DATA AND INFORMATION IS AT THE USER'S SOLE RISK. BY USING ANY OF THIS MATERIAL, DATA AND INFORMATION, USER AGREES THAT DUCKS UNLIMITED, INC. IS NOT RESPONSIBLE FOR THEIR USE OF THE MATERIAL, DATA AND INFORMATION OR THE RESULTS THEREOF.

"BEFORE YOU DIG"
 BEFORE THE START OF CONSTRUCTION. THE OWNER OF ANY UTILITIES INVOLVED MUST BE NOTIFIED. THE EXCAVATOR/CONTRACTOR IS RESPONSIBLE FOR GIVING THIS NOTICE BY CALLING "ONE CALL OF COLORADO" AT 811. A 72 HOUR NOTIFICATION AND FULL DESCRIPTION OF LOCATION IS REQUIRED.

DU DESIGN ENGINEER:
 THOMAS PARKER, P.E.
 (970) 692-3375

DU CONSTRUCTION ENGINEER:
 THOMAS PARKER, P.E.
 (970) 692-3375



GREAT PLAINS REGIONAL OFFICE

P.E. SEAL:

DESIGNED BY: TRP
 DRAWN BY: TRP
 SURVEYED BY: TRP
 CHECKED BY:
 APPROVED BY:
 APPROVED BY:

REVISION:	DATE:	BY:
1		
2		
3		
4		
5		
6		
7		
8		

PROJECT: **BLANCA WETLANDS - WELL 58 REDRILL**
 SHEET TITLE: **PLAN**

DATE: MARCH 2026

SHEET TITLE: **PLAN**

SCALES ARE ACCURATE ON 24"x36" SHEET SIZE

DU PROJECT NUMBER: **CO-45-100**

SHEET NUMBER: **3**

SHEET 3 OF 7



GREAT PLAINS REGIONAL OFFICE

P.E. SEAL:

DESIGNED BY: TRP
DRAWN BY: TRP
SURVEYED BY: TRP
CHECKED BY:
APPROVED BY:

DATE:
REVISION:

NO.	DATE	DESCRIPTION
1		
2		
3		
4		
5		
6		
7		
8		

PROJECT: **BLANCA WETLANDS - WELL 58 REDRILL**
SHEET TITLE: **PLAN DETAILS**

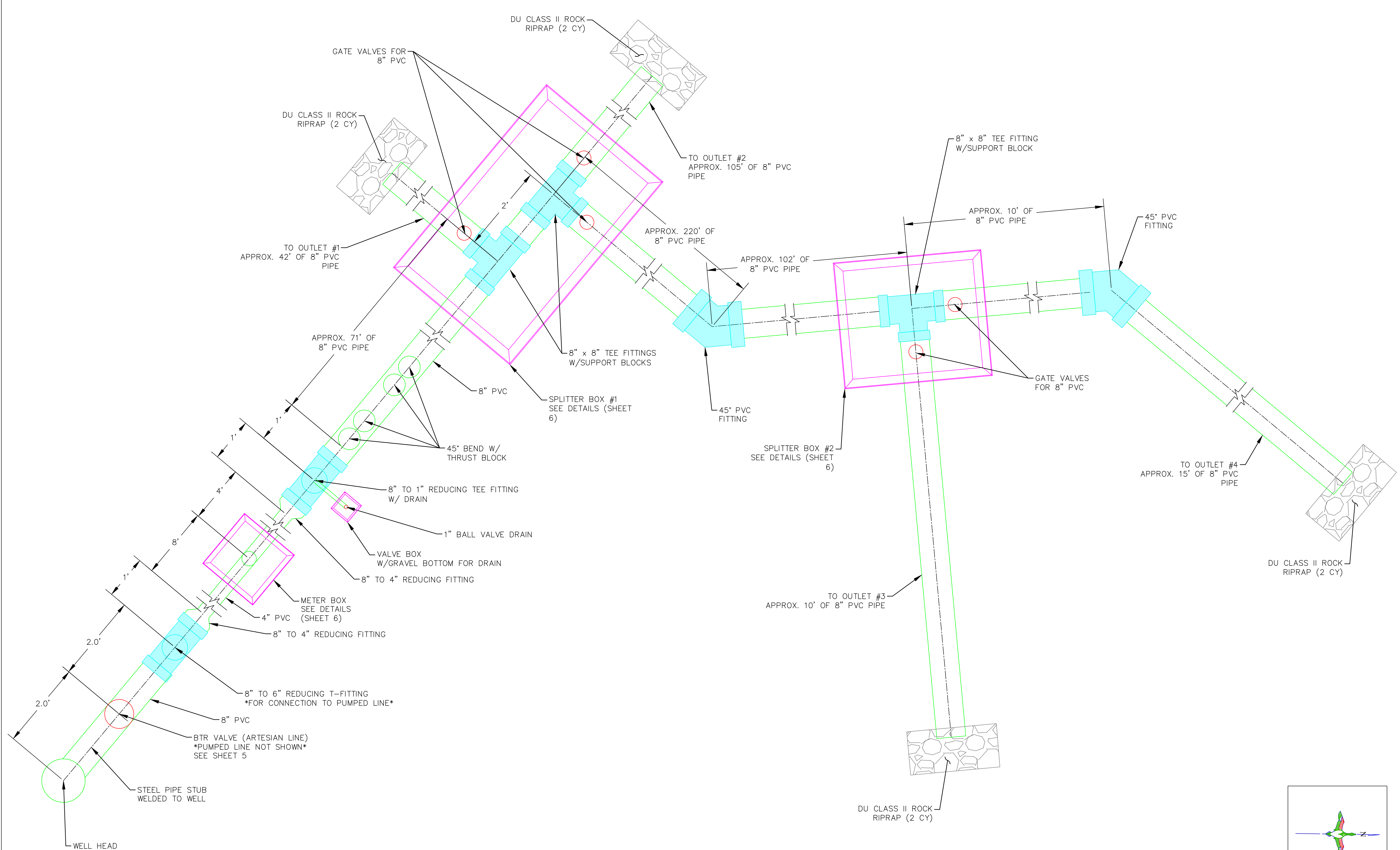
DATE: MARCH 2026

SHEET TITLE: **PLAN DETAILS**

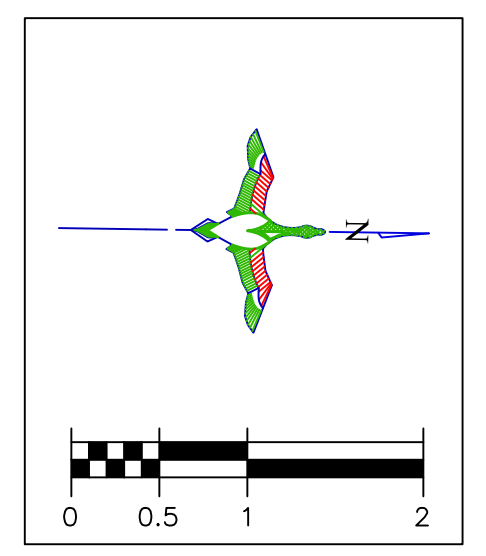
SCALES ARE ACCURATE ON 24"X36" SHEET SIZE
DU PROJECT NUMBER: **CO-45-100**

SHEET NUMBER: **4**

SHEET 4 OF 7



**WATER DISTRIBUTION SYSTEM
PLAN VIEW
SCALE: 1" = 1'**



THIS MATERIAL, DATA AND INFORMATION IS THE PROPERTY OF DUCKS UNLIMITED, INC. IT MAY NOT BE USED OR REPRODUCED FOR ANY PURPOSE WITHOUT THE PRIOR WRITTEN CONSENT OF AN AUTHORIZED AGENT OF DUCKS UNLIMITED, INC. DUCKS UNLIMITED, INC. MAKES NO REPRESENTATION OR WARRANTY OF ANY KIND REGARDING THIS MATERIAL, DATA AND INFORMATION, INCLUDING, BUT NOT LIMITED TO, THE ACCURACY OF THE MATERIAL, DATA AND INFORMATION OR ITS SUITABILITY FOR ANY PURPOSE. ALL USE OF THE MATERIAL, DATA AND INFORMATION IS AT THE USER'S SOLE RISK. BY USING ANY OF THIS MATERIAL, DATA AND INFORMATION, USER AGREES THAT DUCKS UNLIMITED, INC. IS NOT RESPONSIBLE FOR THEIR USE OF THE MATERIAL, DATA AND INFORMATION OR THE RESULTS THEREOF.

"BEFORE YOU DIG"
BEFORE THE START OF CONSTRUCTION, THE OWNER OF ANY UTILITIES INVOLVED MUST BE NOTIFIED. THE EXCAVATOR/CONTRACTOR IS RESPONSIBLE FOR GIVING THIS NOTICE BY CALLING "ONE CALL OF COLORADO" AT 811. A 72 HOUR NOTIFICATION AND FULL DESCRIPTION OF LOCATION IS REQUIRED.

DU DESIGN ENGINEER:
THOMAS PARKER, P.E.
(970) 692-3375

DU CONSTRUCTION ENGINEER:
THOMAS PARKER, P.E.
(970) 692-3375



GREAT PLAINS REGIONAL OFFICE

P.E. SEAL:

DESIGNED BY: TRP
 DRAWN BY: TRP
 SURVEYED BY: TRP
 CHECKED BY:
 APPROVED BY:

DATE:
 REVISION:

1	
2	
3	
4	
5	
6	
7	
8	

PROJECT: **BLANCA WETLANDS - WELL 58 REDRILL**
 SHEET TITLE: **PROFILE**

DATE: MARCH 2026

SHEET TITLE: **DETAILS**

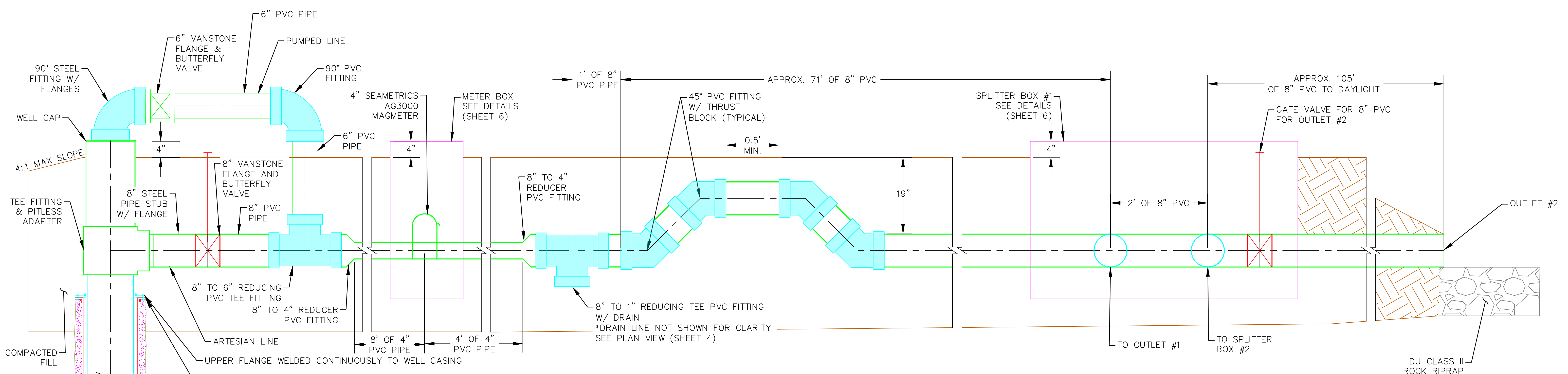
DU PROJECT NUMBER: **CO-45-100**

SHEET NUMBER: **5**

SCALES ARE ACCURATE ON 24"x36" SHEET SIZE

DU PROJECT NUMBER: **CO-45-100**

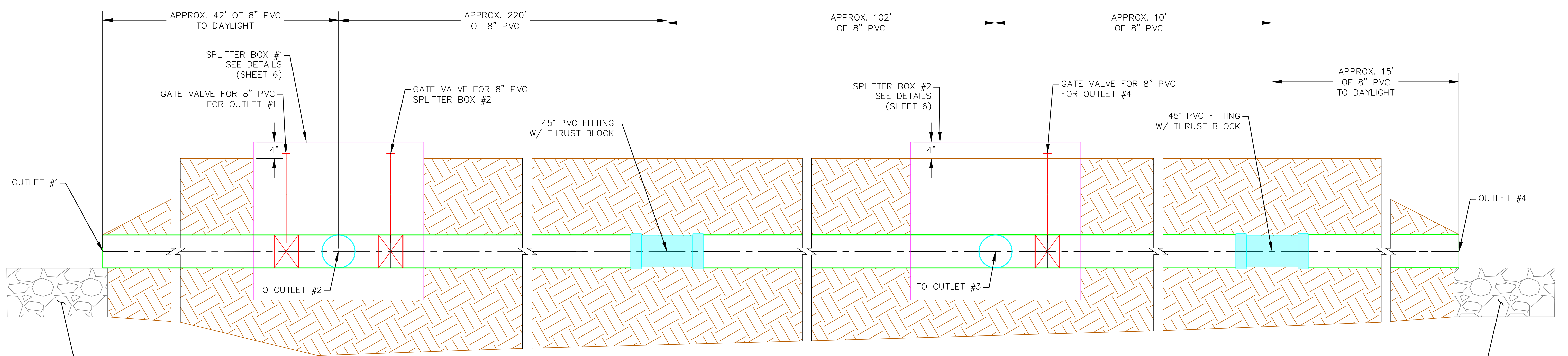
SHEET NUMBER: **5**
 SHEET 5 OF 7



WATER DISTRIBUTION SYSTEM - WELL HEAD TO OUTLET #2
 PROFILE VIEW
 1"=1'

- NOTES:**
- ESTIMATED DEPTH OF WELL IS 900-FT.
 - WELL SHALL BE DEVELOPED FOR MAXIMUM FLOW.
 - WATERTIGHT SEAL BETWEEN SURFACE CASING AND WELL CASING IS REQUIRED.
 - WELL REDRILLING WORK SHALL INCLUDE THE CONSTRUCTION OF A WELL PAD (ONLY IF NECESSARY TO PROTECT SOILS AND EQUIPMENT) OF NO GREATER THAN 100-FT BY 100-FT. MINIMIZE SOIL DISTURBANCE. TO THE EXTENT PRACTICABLE, NATIVE VEGETATION SHOULD BE RETAINED IN AND AROUND THE PROJECT ACTIVITY AREA, AND SOIL DISTURBANCE KEPT TO A MINIMUM INCLUDING AVOIDING PROJECT WORK WHEN SOILS ARE WET AND EXCESSIVE RUTTING OR OTHER DAMAGE MAY OCCUR. CONTRACTOR TO TAKE APPROPRIATE MEASURES TO PREVENT ESTABLISHMENT AND SPREAD OF NOXIOUS WEEDS AS FOUND IN THE SLVFO NOXIOUS WEEDS MANAGEMENT PLAN. ALL VEHICLES AND EQUIPMENT SHOULD BE WASHED BEFORE ENTERING THE WORKSITE TO LIMIT TRANSPORT OF NON-NATIVE AND/OR NOXIOUS WEEDS.

- PUMP & FLOW METER NOTES:**
- PUMP NOT SHOWN IN PROFILE FOR CLARITY
 - CONTRACTOR TO DESIGN PUMP BASED ON A OPTIMAL 500 GPM MAX FLOW RATE AND DRAWDOWN DETERMINED DURING TESTING.
 - BLM/DU TO APPROVE PUMP & FLOW METER BEFORE PURCHASE. SEAMETRICS AG3000 FLANGED MAGMETER PREFERRED.



WATER DISTRIBUTION SYSTEM - OUTLET #1 TO OUTLET #4
 PROFILE VIEW
 1"=1'

THIS MATERIAL, DATA AND INFORMATION IS THE PROPERTY OF DUCKS UNLIMITED, INC. IT MAY NOT BE USED OR REPRODUCED FOR ANY PURPOSE WITHOUT THE PRIOR WRITTEN CONSENT OF AN AUTHORIZED AGENT OF DUCKS UNLIMITED, INC. DUCKS UNLIMITED, INC. MAKES NO REPRESENTATION OR WARRANTY OF ANY KIND REGARDING THIS MATERIAL, DATA AND INFORMATION, INCLUDING, BUT NOT LIMITED TO, THE ACCURACY OF THE MATERIAL, DATA AND INFORMATION OR ITS SUITABILITY FOR ANY PURPOSE. ALL USE OF THE MATERIAL, DATA AND INFORMATION IS AT THE USER'S SOLE RISK. BY USING ANY OF THIS MATERIAL, DATA AND INFORMATION, USER AGREES THAT DUCKS UNLIMITED, INC. IS NOT RESPONSIBLE FOR THEIR USE OF THE MATERIAL, DATA AND INFORMATION OR THE RESULTS THEREOF.

"BEFORE YOU DIG"
 BEFORE THE START OF CONSTRUCTION. THE OWNER OF ANY UTILITIES INVOLVED MUST BE NOTIFIED. THE EXCAVATOR/CONTRACTOR IS RESPONSIBLE FOR GIVING THIS NOTICE BY CALLING "ONE CALL OF COLORADO" AT 811. A 72 HOUR NOTIFICATION AND FULL DESCRIPTION OF LOCATION IS REQUIRED.

DU DESIGN ENGINEER:
 THOMAS PARKER, P.E.
 (970) 692-3375

DU CONSTRUCTION ENGINEER:
 THOMAS PARKER, P.E.
 (970) 692-3375



GREAT PLAINS REGIONAL OFFICE

P.E. SEAL:

DESIGNED BY:	TRP
DRAWN BY:	TRP
SURVEYED BY:	TRP
CHECKED BY:	
APPROVED BY:	
APPROVED BY:	

REVISION:	DATE:	BY:
1		
2		
3		
4		
5		
6		
7		
8		

PROJECT:	BLANCA WETLANDS - WELL 58 REDRILL
SHEET TITLE:	STRUCTURE DETAILS
DATE:	MARCH 2026
SHEET TITLE:	STRUCTURE DETAILS
DU PROJECT NUMBER:	CO-45-100
SHEET NUMBER:	6

SCALES ARE ACCURATE ON 24"x36" SHEET SIZE

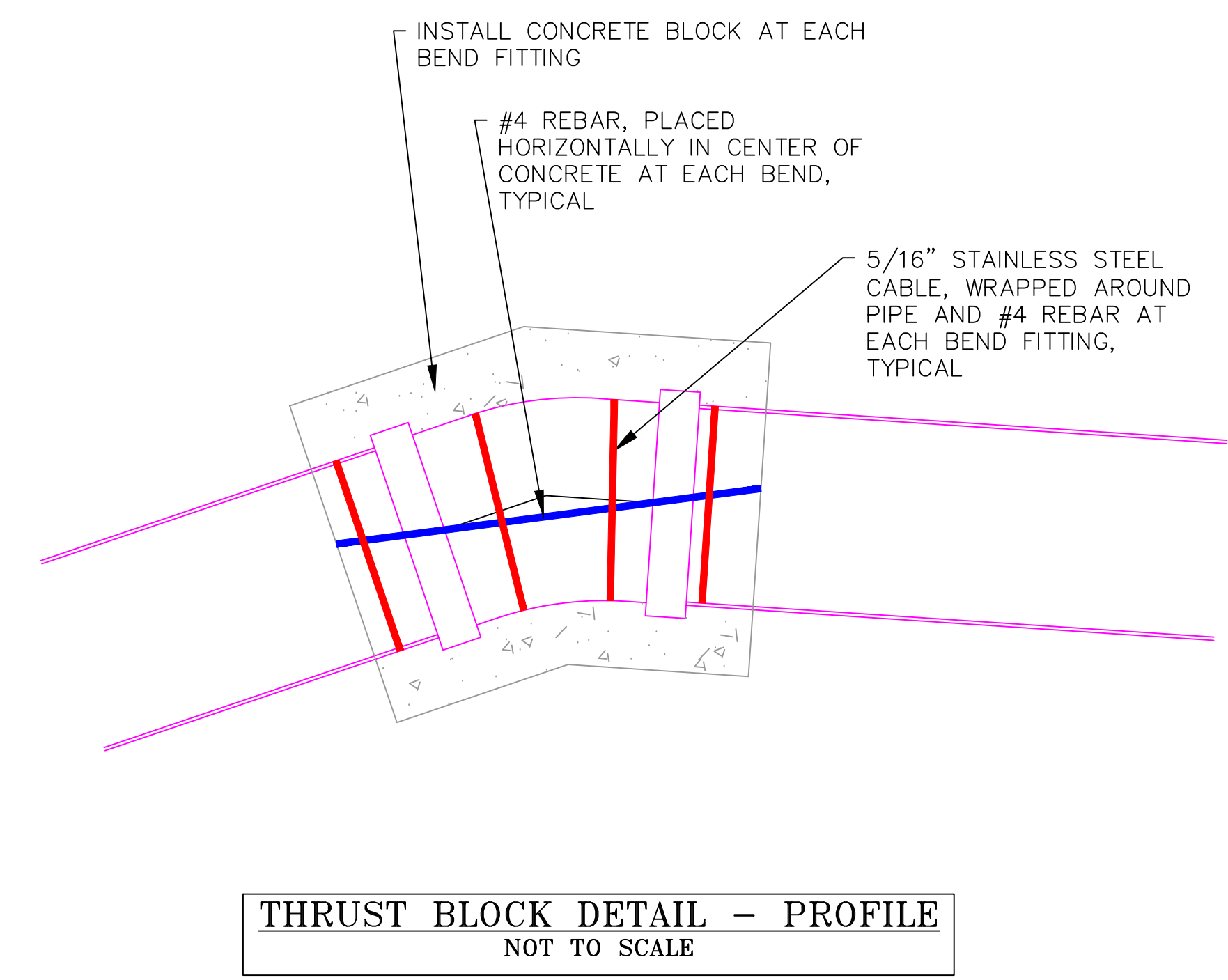
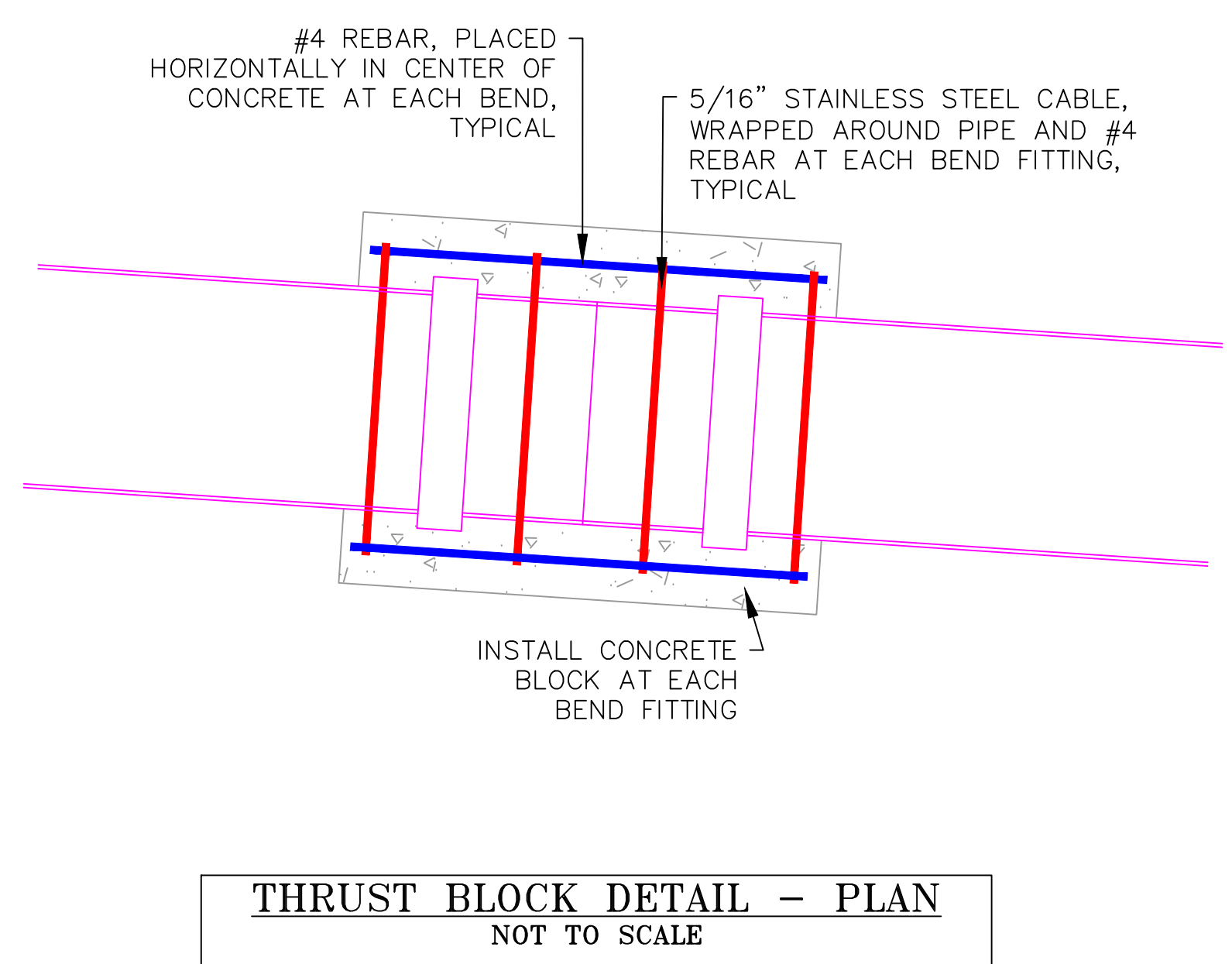
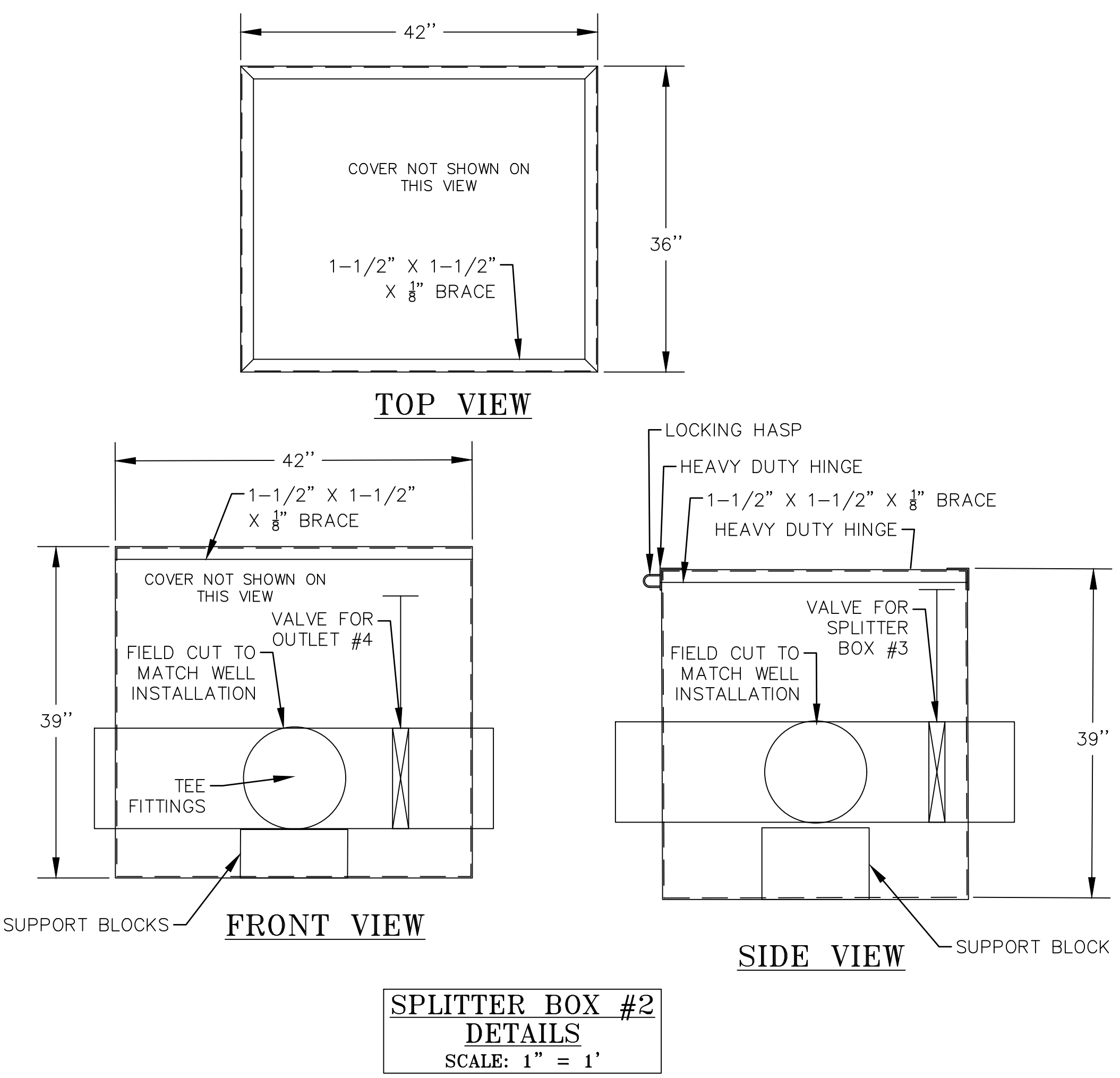
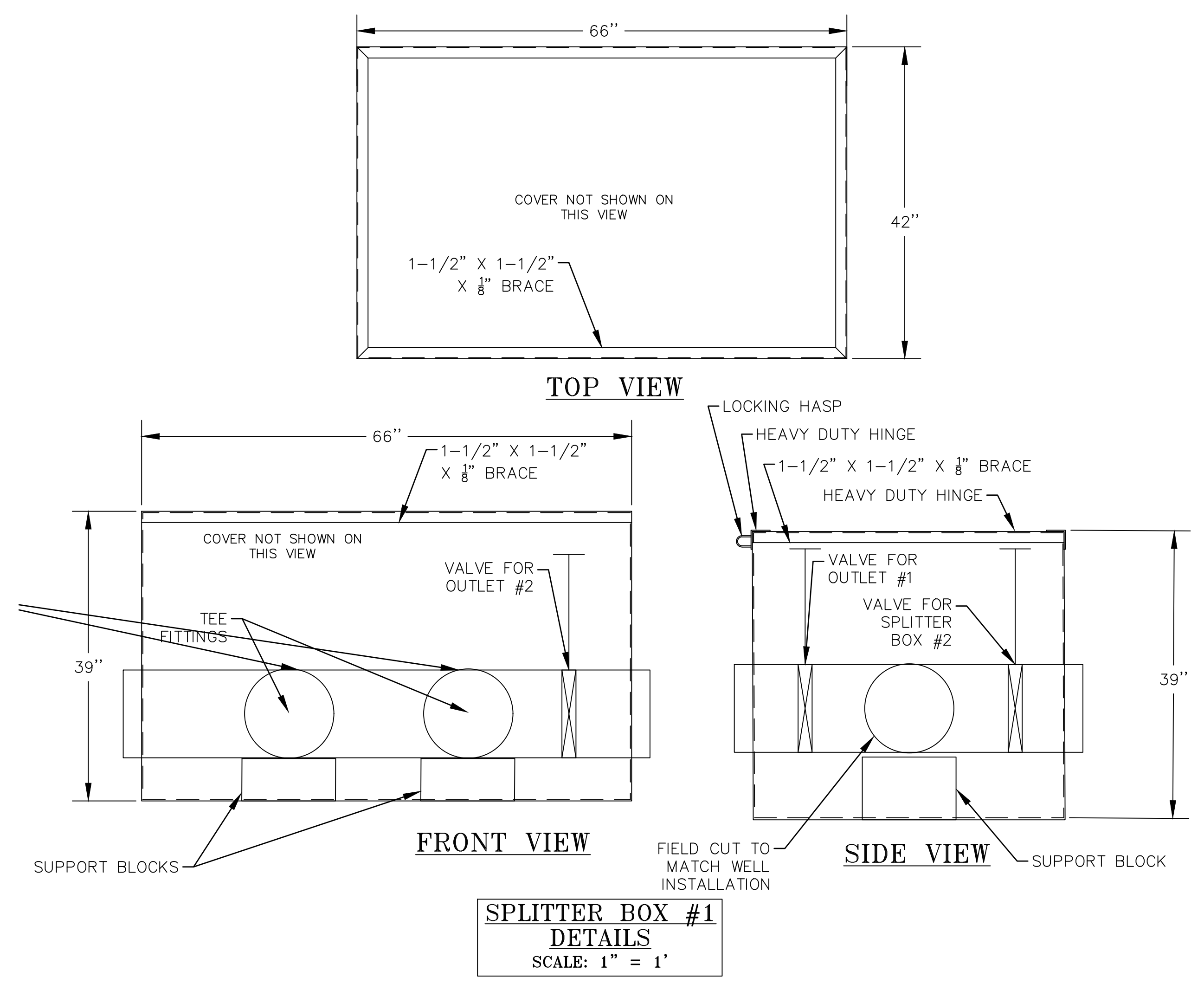
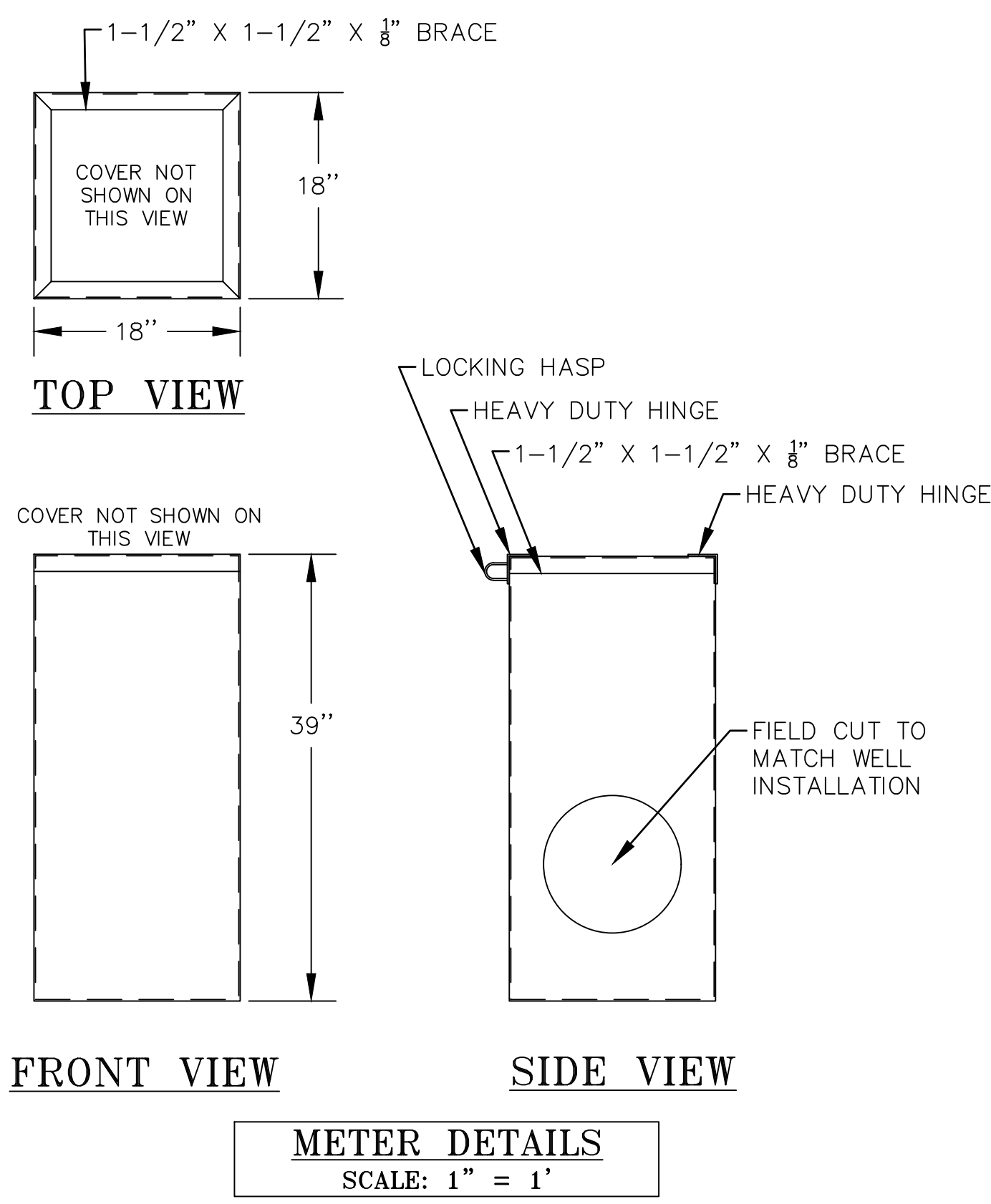
DU PROJECT NUMBER: CO-45-100

SHEET NUMBER: 6

SHEET 6 OF 7

NOTES:

- ALL BOXES SHALL BE FABRICATED WITH 1/8" STEEL PLATE. ALL WELDS SHALL BE 1/8" FILLET WELDS. ALL WELDED SEAMS SHALL BE CONTINUOUS AND WATERTIGHT.
- STEEL BOXES SHOULD BE LOCKABLE. CONTRACTOR TO SUPPLY AND INSTALL LOCKING HASP ON BOTH VALVE AND METER BOXES. DU/BLM TO SUPPLY LOCKS AFTER INSTALLATION IS COMPLETE
- BOTTOM OF VALVE AND METER BOXES SHOULD BE LEFT OPEN AND GROUND SURFACE SHOULD BE COMPACTED TO ALLOW EASY ACCESS FOR MAINTENANCE IN THE BOXES.
- STEEL BOXES SHOULD NOT BE HOT-DIP GALVANIZED.
- GALVANIZING AND FIELD WELDING COATING REQUIREMENTS:
 - HOT-DIP GALVANIZING IS THE PREFERRED CORROSION PROTECTION METHOD FOR ALL STEEL COMPONENTS, IDEALLY PERFORMED AFTER SHOP WELDING IS COMPLETED.
 - ALL UNGALVANIZED STEEL, INCLUDING WELDS, SHALL BE HOT-DIP GALVANIZED UNLESS OTHERWISE APPROVED.
 - FOR ANY FIELD WELDING PERFORMED ON GALVANIZED STEEL:
 - WELDED AREAS SHALL BE CLEANED OF SLAG AND CONTAMINANTS, THEN COATED WITH:
 - TWO (2) COATS OF ZINC-RICH PAINT (SUCH AS ZRC OR RUST-OLEUM COLD GALV), ACHIEVING A TOTAL DRY FILM THICKNESS OF 3-4 MILS.
 - THE PAINT USED MUST CONTAIN GREATER THAN 90% ZINC CONTENT IN THE DRY FILM.
 - THE CONTRACTOR SHALL ENSURE THAT MANUFACTURER-RECOMMENDED RECOAT TIMES ARE FOLLOWED, TYPICALLY 2 TO 20 HOURS BETWEEN COATS, TO ENSURE PROPER ADHESION AND COATING PERFORMANCE.



THIS MATERIAL, DATA AND INFORMATION IS THE PROPERTY OF DUCKS UNLIMITED, INC. IT MAY NOT BE USED OR REPRODUCED FOR ANY PURPOSE WITHOUT THE PRIOR WRITTEN CONSENT OF AN AUTHORIZED AGENT OF DUCKS UNLIMITED, INC. DUCKS UNLIMITED, INC. MAKES NO REPRESENTATION OR WARRANTY OF ANY KIND REGARDING THIS MATERIAL, DATA AND INFORMATION, INCLUDING, BUT NOT LIMITED TO, THE ACCURACY OF THE MATERIAL, DATA AND INFORMATION OR ITS SUITABILITY FOR ANY PURPOSE. ALL USE OF THE MATERIAL, DATA AND INFORMATION IS AT THE USER'S SOLE RISK. BY USING ANY OF THIS MATERIAL, DATA AND INFORMATION, USER AGREES THAT DUCKS UNLIMITED, INC. IS NOT RESPONSIBLE FOR THEIR USE OF THE MATERIAL, DATA AND INFORMATION OR THE RESULTS THEREOF.

"BEFORE YOU DIG"
BEFORE THE START OF CONSTRUCTION, THE OWNER OF ANY UTILITIES INVOLVED MUST BE NOTIFIED. THE EXCAVATOR/CONTRACTOR IS RESPONSIBLE FOR GIVING THIS NOTICE BY CALLING "ONE CALL OF COLORADO" AT 811. A 72 HOUR NOTIFICATION AND FULL DESCRIPTION OF LOCATION IS REQUIRED.

DU DESIGN ENGINEER:
THOMAS PARKER, P.E.
(970) 692-3375

DU CONSTRUCTION ENGINEER:
THOMAS PARKER, P.E.
(970) 692-3375

SPECIFICATIONS:

- ALL WATER WELL WORK DONE UNDER THIS CONTRACT SHALL MEET OR EXCEED THE APPLICABLE SECTIONS OF THE MOST CURRENT VERSION OF THE STATE OF COLORADO "RULES AND REGULATIONS FOR WATER WELL CONSTRUCTION, PUMP INSTALLATION, CISTERN INSTALLATION AND MONITORING AND OBSERVATION HOLE/WELL CONSTRUCTION." HEREAFTER WILL BE KNOWN AS STATE OF COLORADO "CONSTRUCTION RULES 2 CCR 402-2". ADDITIONALLY, WATER WELL WORK DONE UNDER THIS CONTRACT SHALL MEET OR EXCEED APPLICABLE SPECIFICATIONS PRESENTED IN THE DUCKS UNLIMITED STANDARD CONSTRUCTION SPECIFICATIONS, IN PARTICULAR UNDER SECTION 314, WATER WELL DRILLING.

GENERAL INFORMATION & NOTES:

- CONTRACTOR TO FURNISH ALL LABOR, EQUIPMENT, SUPPLIES, AND MATERIALS, TO DRILL, CASE, CONSTRUCT, DEVELOP, AND TEST ONE COMBINATION ARTESIAN & PUMPED WATER WELL. ADDITIONALLY, THERE SHALL BE ONE ARTESIAN WATER WELL PLUGGED AND ABANDONED. WORK SHALL ALSO INCLUDE FURNISHING AND INSTALLING A PROPELLER FLOW METER, SHUTOFF VALVE, AND REQUIRED PIPING TO CONNECT THE NEW WELL TO NEW PIPING (CONTRACTOR FURNISHED). THE WELL SHALL BE SET UP WITH A WELLHEAD HAVING A FLOWING WELL PITLESS ADAPTER AND A FULL PORT WELLHEAD VALVE THAT ARE SUCH THAT THERE WILL BE CLEAR HOLE OPEN ACCESS AVAILABLE FOR FUTURE WELL MAINTENANCE WORK THAT WILL ALLOW ISOLATION OF THE WELL, PERIODIC SHUT-IN PRESSURE TESTS, AND OPEN WELL FLOW TESTS.
- WHERE A CONFLICT OCCURS BETWEEN REFERENCE DOCUMENTS AND PROJECT SPECIFICATIONS, THE PROJECT SPECIFICATIONS SHALL GOVERN. WHEN A CONFLICT BETWEEN PROJECT SPECIFICATIONS AND STATE OF COLORADO "CONSTRUCTION RULES 2 CCR 402-2" THE STATE OF COLORADO "CONSTRUCTION RULES 2 CCR 402-2" SHALL PREVAIL.
- BLM WILL PROVIDE THE NEW WELL PERMITS.

PROJECT/SITE CONDITION NOTES:

- ENVIRONMENTAL CONSIDERATIONS: CONTRACTOR SHALL, TO THE EXTENT FEASIBLE, PRESERVE PLANT LIFE AND OTHER NATURAL FEATURES WITHIN THE WORK SITE. CLEAN UP LITTER AND DISCARDED MATERIAL GENERATED BY THE CONSTRUCTION AND DISPOSE OF AT AN APPROVED SANITARY LANDFILL. DO NOT LEAVE ANY ITEMS LYING AROUND THAT CAN BE BLOWN AWAY BY THE WIND.
- CLEAN EQUIPMENT: ALL EQUIPMENT SHALL BE WASHED PRIOR TO ARRIVING AT THE BLANCA WETLANDS TO REMOVE ALL MUD AND DEBRIS, TO PREVENT THE SPREAD OF NOXIOUS WEEDS.

GEOPHYSICAL LOGGING NOTES:

- CONTRACTOR TO FURNISH A COMPLETE GEOPHYSICAL LOG. LOGGING SHALL FOLLOW COLORADO'S WATER WELL "CONSTRUCTION RULES 2 CCR 402-2. PRIOR TO RUNNING THE GEOPHYSICAL LOG, THE CONTRACTOR SHALL CEASE DRILLING AND CIRCULATE AND THOROUGHLY RECONDITION THE DRILLING FLUID. THE DRILL STRING SHALL BE REMOVED, AND THE LOGGING TOOLS SHALL BE IMMEDIATELY RUN INTO THE HOLE.

PLUGGING & ABANDONMENT OF EXISTING WELL NOTES:

- THE CONTRACTOR SHALL PLUG, SEAL, AND ABANDON THE EXISTING WELL FOLLOWING COMPLETION OF THE REPLACEMENT WELL. THE WELL SHALL BE ABANDONED IN ACCORDANCE WITH STATE REGULATIONS AND REQUIREMENTS, AND COLORADO'S WATER WELL CONSTRUCTION RULES 2 CCR 402-2. THE CONTRACTOR SHALL REMOVE AND DISPOSE OF ALL EXISTING PIPES, VALVES, AND ACCESSORIES ATTACHED TO THE WELLHEAD THAT CANNOT BE REUSED WITH THE NEW WELL.

DRILLING WELL HOLE NOTES:

- DRILLING EQUIPMENT: THE WELL MAY BE DRILLED WITH AIR ROTARY, OR MUD ROTARY TECHNIQUES AS DETERMINED BY THE DRILLER. THE CONTRACTOR SHALL PROVIDE WITH THE BID THE PROPOSED METHOD OF DRILLING DETAILING THE EQUIPMENT TO BE USED TO DRILL THE WELL.
- SITE PREPARATION: SURFACE DISTURBANCE AT SITES SHALL BE MINIMIZED.
- WELL LOG: SHALL BE KEPT PER STATE OF COLORADO "RULES AND REGULATIONS FOR WATER WELL CONSTRUCTION, PUMP INSTALLATION, CISTERN INSTALLATION AND MONITORING AND OBSERVATION HOLE/WELL CONSTRUCTION." HEREAFTER WILL BE KNOWN AS COLORADO'S WATER WELL "CONSTRUCTION RULES 2 CCR 402-2". CONTRACTOR TO PREPARE AND SUBMIT REPORTS REQUIRED BY COLORADO'S WATER WELL "CONSTRUCTION RULES 2 CCR 402-2 FOR FILING ON WATER WELLS AND PREPARE AND SUBMIT REPORTS REQUIRED OF THE DRILLER BY STATE LAW.
- THE DU CONSTRUCTION ENGINEER WILL STAKE THE PROPOSED DRILLING LOCATION AND WATER DISTRIBUTION SYSTEM. THE NEW WELL WILL BE WITHIN 200 FEET OF THE EXISTING WELL. THE EXISTING (OLD) WELL SHALL BE ABANDONED AFTER EACH NEW WELL IS DRILLED AND PUT INTO PRODUCTION.

PLAIN CASING NOTES:

- THE HOLE SHALL BE CASED THE FULL DEPTH. THE HOLE SIZE SHALL BE ACCORDING TO STATE OF COLORADO WATER WELL CONSTRUCTION RULES 2CCR 402-2 REQUIRED FOR THE SPECIFIED CASING SIZE. THE PLAIN WELL CASING SHALL BE PLACED THROUGH THE SURFACE CASING. A FIGURE K PACKER SHALL BE INSTALLED BETWEEN THE WELL CASING AND THE SURFACE CASING. SURFACE CASING SHALL END JUST BELOW THE PITLESS UNIT.
- MATERIALS SPECIFIED SHALL BE NEW AND FREE FROM DEFECTS. NO USED OR OLD MATERIAL WILL BE ACCEPTED.

SURFACE CASING NOTES:

- SURFACE CASING TO BE INSTALLED TO A DEPTH OF 100-FT.
- MATERIALS SPECIFIED SHALL BE NEW AND FREE FROM DEFECTS. NO USED OR OLD MATERIAL WILL BE ACCEPTED.
- SURFACE CASING SHALL BE INSTALLED TO A MINIMUM 100 FEET DEPTH AND GROUTED IN ACCORDANCE WITH STATE OF COLORADO WATER WELL CONSTRUCTION RULES 2CCR 402-2.

WELL SCREEN NOTES:

- WELL SCREENS TO BE COMPLETED WITH MODERN AND EFFICIENT FACTORY SLOTTED CASING AND PROPERLY SIZED GRAVEL PACK.
- SELECT THE INSTALLATION METHOD, ACCORDING TO THE SCREEN MANUFACTURER'S RECOMMENDATIONS.
- SCREEN LENGTHS AND LOCATIONS SHALL BE DETERMINED BASED ON GEOPHYSICAL LOG DATA. THE SCREENS SHALL BE OF STAINLESS STEEL.

WELL TESTING NOTES:

- THE CONTRACTOR SHALL MAKE PRELIMINARY YIELD TESTS OR ESTIMATES DURING DRILLING OPERATIONS ON EACH WATER-BEARING STRATUM PENETRATED AS REQUESTED BY THE DU CONSTRUCTION ENGINEER AND ONLY IF THE TEST WILL NOT COMPROMISE THE BORE-HOLE INTEGRITY.
- AFTER THE WELL HAS BEEN COMPLETELY CONSTRUCTED AND CLEANED, THE CONTRACTOR SHALL MAKE PRELIMINARY YIELD TESTS DURING THE DEVELOPMENT OF THE WELL TO EVALUATE THE EFFECTIVENESS OF THE WELL DEVELOPMENT. SINCE THE WELLS ARE ANTICIPATED TO BE FLOWING, THESE TESTS WILL SIMPLY BE A MEASUREMENT OF THE DISCHARGE.
- AFTER THE WELL HAS BEEN COMPLETELY CONSTRUCTED AND DEVELOPED, THE CONTRACTOR SHALL MAKE A FINAL DETERMINATION OF THE WELL YIELD. THE CONTRACTOR SHALL PERFORM THE YIELD TEST IN THE PRESENCE OF THE CONTRACTING OFFICER'S REPRESENTATIVE. THE CONTRACTOR SHALL PROVIDE A ONE WORKING DAY NOTICE TO THE DU CONSTRUCTION ENGINEER PRIOR TO PERFORMING THE TEST.

WELLHEAD VALVE NOTES:

- THE WELLHEAD VALVE SHALL BE OF FULL PORT DESIGN AND THREADED TO ATTACH TO THE WELLHEAD AND ALLOW FOR REMOVAL. VALVES SHALL BE BRASS AND MEET THE REQUIREMENTS OF ANSI B 16.15-85.
- THE PITLESS UNIT SHALL BE AN APPROVED UNIT MEETING THE REQUIREMENTS OF COLORADO'S WATER WELL CONSTRUCTION RULES 2CCR 402-2. PITLESS UNIT SHALL BE OF A TYPE INTENDED TO BE INSTALLED IN THE WELL CASING USED ON THIS PROJECT. IT SHALL PROVIDE HORIZONTAL DISCHARGE AND VALVING AND ALLOW FULL PORT ACCESS THROUGH THE UNIT TO THE WELL BELOW.

WELL DEVELOPMENT NOTES:

- EACH WATER-BEARING AQUIFER TO BE USED FOR WELL PRODUCTION SHALL BE DEVELOPED BY HYDRAULIC JETTING. EACH WELL SHALL BE DEVELOPED TO OPTIMALLY PRODUCE A FLOW OF AT LEAST 200 GPM UP TO 500 GPM. DEVELOPMENT SHALL BE PERFORMED IN THE PRESENCE OF THE DU CONSTRUCTION ENGINEER.

WATER DISTRIBUTION SYSTEM NOTES:

- SEE SHEETS 3, 4, & 5 FOR WATER DISTRIBUTION SYSTEM DETAILS. DU CONSTRUCTION ENGINEER TO STAKE OUT THE WATER DISTRIBUTION SYSTEM IN THE FIELD BEFORE INSTALLATION.
- WATER DISTRIBUTION SYSTEM WORK INCLUDES FURNISHING AND INSTALLING PVC PIPING, FLOW METER, VALVES, ETC. FOR WATER DISTRIBUTION PIPELINES TO CONVEY WATER TO THE EXISTING WETLAND COMPLEX. ALL WORK SHALL BE PERFORMED IN ACCORDANCE WITH THESE SPECIFICATIONS, DRAWINGS AND AS STAKED IN THE FIELD. IT IS THE INTENT OF THESE SPECIFICATIONS TO PROVIDE A COMPLETE AND SATISFACTORY WORKING INSTALLATION TO DELIVER THE NEWLY DRILLED WELL WATER TO THE EXISTING WETLAND COMPLEX.
- CONTRACTOR TO SUBMIT THE MANUFACTURER'S INSTALLATION INSTRUCTIONS FOR THE MAGMETER EQUIPMENT ITEMS TO BE USED ON THIS PROJECT.
- CONTRACTOR TO COMPLETE AND SUBMIT FORM 3.1 - NOTICE OF TOTALIZING FLOW METER VERIFICATION AS PER STATE OF COLORADO STATE OF COLORADO WATER WELL CONSTRUCTION RULES 2 CCR 402-2.
- MAGMETER SHALL REGISTER IN US GPM. IT SHALL BE A SEAMETRICS AG3000 FLANGED-TYPE MAGMETER. THE REGISTER SHALL CONTAIN A MECHANICAL INSTANTANEOUS INDICATOR WITH THE OPTIONAL SEVEN-DIGIT TOTALIZER. THE FLOW METER SHALL HAVE A FLOW RANGE OF 6 TO 1,285 GPM.
- APPROXIMATELY 640 LF OF PVC PIPE WILL BE REQUIRED FOR THE WATER DISTRIBUTION SYSTEM. THE METER BOX SHALL BE 1/8-INCH STEEL PLATE PER SHEET 6.
- TRENCHING ALIGNMENT SHALL BE STAKED IN THE FIELD BY THE DU CONSTRUCTION ENGINEER. CUT DEPTHS WILL BE INCLUDED ON THE STAKES TO MEET A MINIMUM GRADE OF 1%. TRENCHES SHALL BE FREE OF DEBRIS, MATERIAL, OR OBSTRUCTIONS THAT MAY DAMAGE PIPE.
- CONTRACTOR TO INSTALL PIPE, VALVES, AND COMPONENTS ACCORDING TO THE MANUFACTURER'S INSTRUCTIONS. INSTALL PIPES AT TEMPERATURES OVER 40 DEGREES FAHRENHEIT.
- VALVES SHALL BE INSTALLED ACCORDING TO THE MANUFACTURER'S RECOMMENDATIONS AND SHALL BE BACKFILLED IN THE SAME MANNER AS THE PIPE.
- FLOW METER SHALL BE INSTALLED TO MANUFACTURER'S RECOMMENDATIONS. MINIMUM STRAIGHT PIPE DISTANCE SHALL BE INSTALLED AHEAD AND BEHIND THE METER AS RECOMMENDED BY THE MANUFACTURER. INSTALL METER UPSTREAM OF 45 DEGREE FITTINGS TO ENSURE FULL PIPE FLOW. INSTALL THE METER IN THE METER BOX IN SUCH A MANNER THAT THE METER HEAD ARE WITHIN THE METER BOX AND CONFIGURED TO ALLOW FOR FUTURE SERVICING.
- METER BOX SHALL BE INSTALLED IN ACCORDANCE WITH THE DETAILS ON SHEET 6. BOX PENETRATION DIAMETERS SHALL BE NO GREATER THAN THE PIPE DIAMETER PLUS ONE INCH AND SHALL BE SEALED WITH RUB-R-NECK OR EQUAL, JOINT SEALANT IN ACCORDANCE WITH THE MANUFACTURERS' INSTALLATION INSTRUCTIONS. RUB-R-NEK SHALL BE PLACED ON BOTH SIDES OF THE BOX PENETRATION. HEAT MAY BE REQUIRED TO SOFTEN THE RUB-R-NEK FOR PLACEMENT. HAMMER FROM BOTH SIDES TO ASSURE THE SEALER FROM EACH SIDE OF THE PENETRATION ADHERES TO THE OTHER. BACKFILL MAY BE PLACED ONCE THE JOINT SEALANT IS IN PLACE.
- BACKFILL SHALL NOT BE PLACED UNTIL THE SEALER IS IN PLACE ON THE METER BOX PENETRATIONS. MINIMUM DEPTHS OF COVER ARE ONE FOOT. BACKFILL THE VALVE METER BOX TO 4 INCHES BELOW THE TOP OF THE BOX AND SLOPE THE BACKFILL AT A 4:1 SLOPE TO DAYLIGHT. DO NOT BACKFILL OVER THE LOCK. BACKFILL AROUND THE PIPELINES AND BOX TO PROVIDE STABLE SUPPORT FOR THE PIPES AS THEY ENTER AND EXIT THE BOX. THE CONTRACTOR SHALL SUPPORT PIPES AS NECESSARY TO PREVENT SHIFTING OF PIPES, VALVES, OR METERS WHEN BACKFILLING.
- LEAKAGE TEST: PRIOR TO BACKFILLING, THE CONTRACTOR SHALL TEST THE SYSTEM FOR LEAKAGE BY FLOWING WATER IN EACH LINE. RUN 100% OF THE WATER THROUGH EACH VALVE FOR A MINIMUM OF 15 MINUTES TO ENSURE NO LEAKS.
- FLOW METER TEST: METER SHALL BE FUNCTIONAL AND OPERATIONAL. METERS SHALL PASS THE STATE REQUIRED FLOW VERIFICATION TEST WITH A CORRECTION FACTOR BETWEEN 0.950 AND 1.050 AS INDICATED IN FORM 3.1. THE TEST SHALL BE PERFORMED BY A STATE CERTIFIED FLOW METER TESTER IN ACCORDANCE WITH THE COLORADO STATE REGULATIONS.
- PRICES AND PAYMENT WILL BE FULL COMPENSATION FOR THE WORK TO INSTALL THE WATER DISTRIBUTION SYSTEM. PAYMENT WILL BE MADE FOR THE COMPLETE INSTALLATION OF ALL APPURTENANCES, GATE VALVES, VALVE BOXES, PIPELINES, METERS, METER BOXES TO COMPLETE THE PLUMBING OF THE WELL ACCORDING TO THE SPECIFICATIONS, DRAWINGS, AND STAKES IN THE FIELD.

THIS MATERIAL, DATA AND INFORMATION IS THE PROPERTY OF DUCKS UNLIMITED, INC. IT MAY NOT BE USED OR REPRODUCED FOR ANY PURPOSE WITHOUT THE PRIOR WRITTEN CONSENT OF AN AUTHORIZED AGENT OF DUCKS UNLIMITED, INC. DUCKS UNLIMITED, INC. MAKES NO REPRESENTATION OR WARRANTY OF ANY KIND REGARDING THIS MATERIAL, DATA AND INFORMATION, INCLUDING, BUT NOT LIMITED TO, THE ACCURACY OF THE MATERIAL, DATA AND INFORMATION OR ITS SUITABILITY FOR ANY PURPOSE. ALL USE OF THE MATERIAL, DATA AND INFORMATION IS AT THE USER'S SOLE RISK. BY USING ANY OF THIS MATERIAL, DATA AND INFORMATION, USER AGREES THAT DUCKS UNLIMITED, INC. IS NOT RESPONSIBLE FOR THEIR USE OF THE MATERIAL, DATA AND INFORMATION OR THE RESULTS THEREOF.

"BEFORE YOU DIG"
BEFORE THE START OF CONSTRUCTION. THE OWNER OF ANY UTILITIES INVOLVED MUST BE NOTIFIED. THE EXCAVATOR/CONTRACTOR IS RESPONSIBLE FOR GIVING THIS NOTICE BY CALLING "ONE CALL OF COLORADO" AT 811. A 72 HOUR NOTIFICATION AND FULL DESCRIPTION OF LOCATION IS REQUIRED.

DU DESIGN ENGINEER:
THOMAS PARKER, P.E.
(970) 692-3375

DU CONSTRUCTION ENGINEER:
THOMAS PARKER, P.E.
(970) 692-3375



GREAT PLAINS REGIONAL OFFICE

P.E. SEAL:

DESIGNED BY: TRP
 DRAWN BY: TRP
 SURVEYED BY: TRP
 CHECKED BY:
 APPROVED BY:
 APPROVED BY:

REVISION:	DATE:	BY:
1		
2		
3		
4		
5		
6		
7		
8		

PROJECT: **BLANCA WETLANDS - WELL 58 REDRILL**

SHEET TITLE: **NOTES**

DATE: **MARCH 2026**

SHEET TITLE: **NOTES**

SCALES ARE ACCURATE ON 24"x36" SHEET SIZE

DU PROJECT NUMBER: **CO-45-100**

SHEET NUMBER:

7

SHEET 7 OF 7

APPENDIX B

WELL PERMIT AND COMPLETION REPORT

RECEIVED

COLORADO DIVISION OF WATER RESOURCES

1313 Sherman Street - Room 818
Denver, Colorado 80203

NOV 16 '89

WATER RESOURCES
STATE ENGINEER
COLO.

THIS FORM MUST BE SUBMITTED
WITHIN 60 DAYS OF COMPLETION
OF THE WORK DESCRIBED HERE-
ON. TYPE OR PRINT IN BLACK
INK.

WELL COMPLETION AND PUMP INSTALLATION REPORT

PERMIT NUMBER 36195-F Blanca Well No 58

WELL OWNER USDI Bureau of Land Management SE 1/4 of the SE 1/4 of Sec. 13

ADDRESS 31706 Main Canon City, Co 81212 T. 38 N., R. 11 E., NM P.M.

DATE COMPLETED December 1, 1964

HOLE DIAMETER

6 in. from 0 to 580 ft.

_____ in. from _____ to _____ ft.

_____ in. from _____ to _____ ft.

DRILLING METHOD Rotary

CASING RECORD: Plain Casing

Size 2 1/2 & kind STEEL from 0 to 360 ft.

Size _____ & kind _____ from _____ to _____ ft.

Size _____ & kind _____ from _____ to _____ ft.

Perforated Casing

Size 2 1/2 & kind STEEL from 360 to 580 ft.

Size _____ & kind _____ from _____ to _____ ft.

Size _____ & kind _____ from _____ to _____ ft.

GROUTING RECORD

Material UNKNOWN

Intervals _____

Placement Method _____

GRAVEL PACK: Size NONE

Interval _____

TEST DATA

Date Tested December, 1964

Static Water Level Prior to Test Flowing Well ft.

Type of Test Pump _____

Length of Test unknown

Sustained Yield (Metered) 50 Gpm

Final Pumping Water Level _____

WELL LOG

From	To	Type and Color of Material	Water Loc.
		No Log Available	
TOTAL DEPTH <u>580</u>			

Use additional pages necessary to complete log.

PUMP INSTALLATION REPORT

Pump Make Flowing well

Type _____

Powered by _____ HP _____

Pump Serial No. _____

Motor Serial No. _____

Date Installed _____

Pump Intake Depth _____

Remarks _____

WELL TEST DATA WITH PERMANENT PUMP

Date Tested DECEMBER, 1964

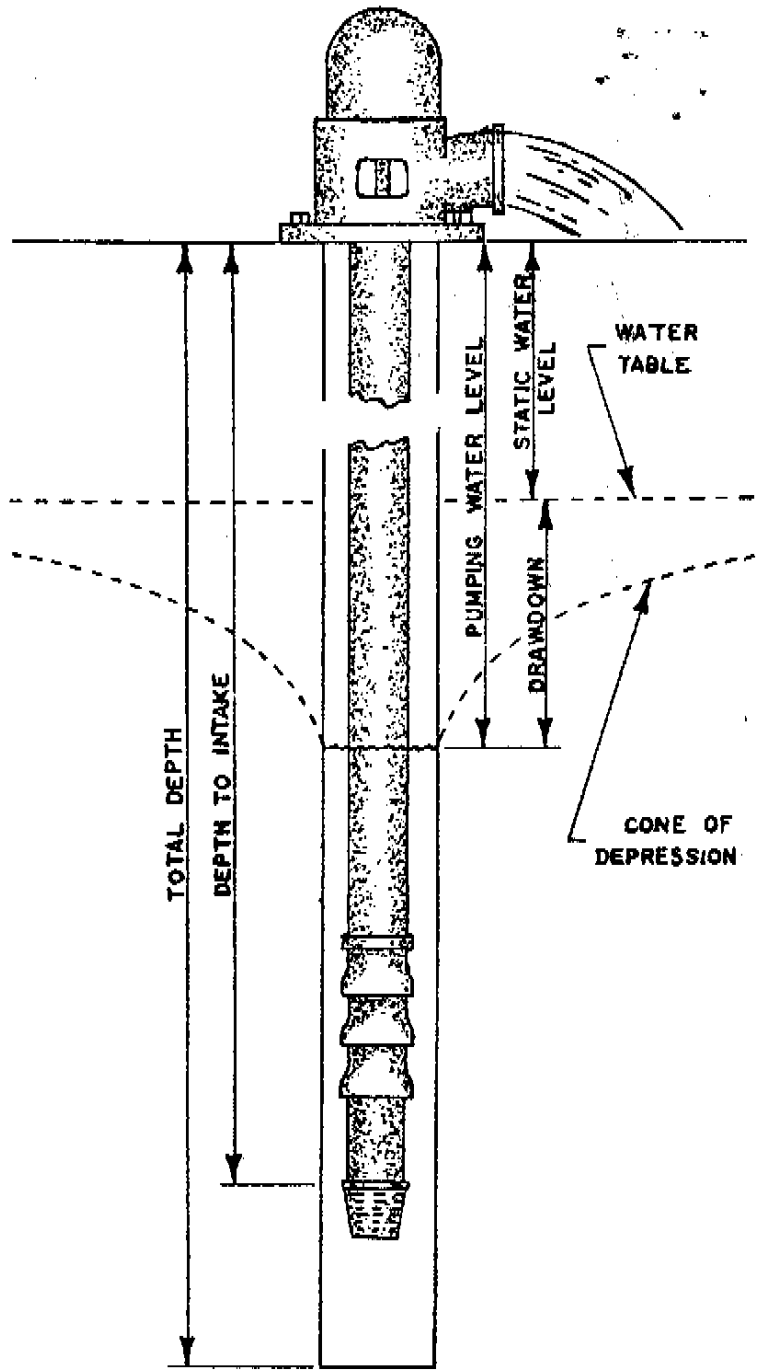
Static Water Level Prior to Test _____

Length of Test _____ Hours

Sustained yield (Metered) 50 GPM

Pumping Water Level _____

Remarks _____



CONTRACTOR'S STATEMENT

The undersigned, being duly sworn upon oath, deposes and says that he is the contractor of the well or pump installation described hereon; that he has read the statement made hereon; knows the content thereof, and that the same is true of his own knowledge.

Signature _____ License No. _____

State of Colorado, County of _____ SS

Subscribed and sworn to before me this _____ day of _____, 19 _____.

My Commission expires: _____, 19 _____.

Notary Public _____

FORM TO BE MADE OUT IN QUADRUPPLICATE: WHITE FORM must be an original copy on both sides and signed. WHITE AND GREEN copies must be filed with the State Engineer. PINK COPY is for the Owner and YELLOW COPY is for the Driller.

SPEC

FORM NO. GWS-10 10/89

STATE OF COLORADO
OFFICE OF THE STATE ENGINEER
818 Centennial Bldg., 1313 Sherman St., Denver, Colorado 80203
(303) 866-3581

RECEIVED Office Use only
APR 8 1990
STATE ENGINEER
COLO.

FOR INSTRUCTIONS, SEE REVERSE SIDE

STATEMENT OF BENEFICIAL USE

WELL PERMIT NUMBER XXXXXXXXXX

1. **WELL OWNER**
NAME(S) U.S. Bureau of Land Management
Mailing Address 3170 East Main St., P.O. Box 2200
City, St. Zip Canon City, CO 81215-2200
Phone (719) 275-0631

4-24-90

2. **WELL LOCATION:** COUNTY Alamosa OWNER'S WELL DESIGNATION Blanca No. 58
(Address) (City) (State) (Zip)
SE 1/4 of the SE 1/4, Sec. 13 Twp. 38 N. or S., Range 11 E. or W. N.M.P.M.
Distances from Section Lines 650 Ft. from N. or S. Line, 1050 Ft. from E. or W. Line.

3. The well is being used for the following purpose(s): See Exhibit A submitted with the permit application.

4. Water from the well was first used beneficially for the above purpose(s) on December 1, 1964

5. The pumping rate claimed is 6 gallons per minute.

6. The average annual amount of water diverted is 9 acre feet.

7. The land area irrigated (watered) by water from this well is: 3 Acres or Square feet,
(Number)
described as: See Exhibit B (Map of Blanca WHA) submitted with permit application.
(Legal Description)
or as Subdivision Lot(s) Block Filing/Unit

8. Well drilled by: U.S. Bureau of Land Management Lic. No:
Pump installed by: N/A - flowing well Lic. No:

9. Meter Mfg. by Serial No.: Date Installed:

I (we) have read the statements made herein, know the contents thereof, and state that they are true to my (our) knowledge. [Pursuant to Section 24-4-104 (13)(a) C.R.S., the making of false statements herein constitutes perjury in the second degree and is punishable as a Class 1 misdemeanor.]

10. Name/Title (Please type or print) Signature Date
Howard L. Wertsbaugh Howard L. Wertsbaugh 3/5/90
District Hydrologist

FOR OFFICE USE ONLY

State Engineer By Date
Court Case No. Div. 3 Co. 02 WD 35 Basin MD Use

COLORADO DIVISION OF WATER RESOURCES
818 Centennial Bldg., 1313 Sherman St., Denver, Colorado 80203

RECEIVED 92-0 ✓

NOV 16 '89

WATER RESOURCES
STATE ENGINEER
COLO.

PERMIT APPLICATION FORM

Application must be complete where applicable. Type or print in **BLACK INK**. No overstrikes or erasures unless initialed.

- FOR: A PERMIT TO USE GROUND WATER
 A PERMIT TO CONSTRUCT A WELL
 A PERMIT TO INSTALL A PUMP
 REPLACEMENT FOR NO. _____
 OTHER Existing Pre-1979 Well
 WATER COURT CASE NO. _____

(1) APPLICANT - mailing address

NAME Bureau of Land Management
 STREET 3170 East Main
 CITY Canon City CO 81212
(State) (Zip)
 TELEPHONE NO. 719-275-0631

FOR OFFICE USE ONLY: DO NOT WRITE IN THIS COLUMN

Receipt No. _____ / 15626-U
 Basin _____ Dist. _____

CONDITIONS OF APPROVAL

This well shall be used in such a way as to cause no material injury to existing water rights. The issuance of the permit does not assure the applicant that no injury will occur to another vested water right or preclude another owner of a vested water right from seeking relief in a civil court action.

(2) LOCATION OF PROPOSED WELL

County Alamosa
 SE 1/4 of the SE 1/4, Section 13
 Twp. 38 N, Rng. 11 E, NM P.M.
(N.S) (E.W)

- 1) APPROVED PURSUANT TO SECTION 37-90-137(2), C.R.S. ON THE CONDITION THAT THE WELL WAS CONSTRUCTED AND PUT TO USE PRIOR TO AUGUST 14, 1979 WHEN THE FEDERAL GOVERNMENT WAS JOINED UNDER THE MCCARREN AMENDMENT IN WATER DIVISION NO. 3.
 - 2) PRODUCTION OF THE WELL IS LIMITED TO 6 G.P.M. OR THE ACTUAL YIELD OF THE AQUIFER WHICHEVER IS LESS.
 - 3) PRODUCTION OF THE WELL IS LIMITED TO THE CONFINED AQUIFER.
 - 4) THE WELL IS SUBJECT TO ADMINISTRATION BY THE DIVISION ENGINEER IN ACCORDANCE WITH APPLICABLE STATUTES, RULES AND REGULATIONS.
 - 5) THE WELL SHALL BE MARKED IN A CONSPICUOUS PLACE WITH APPROPRIATE WELL PERMIT NUMBER, COURT CASE NUMBERS, OWNERS WELL DESIGNATION, AND NAME OF AQUIFER. THE WELL OWNER SHALL TAKE NECESSARY MEANS AND PRECAUTIONS TO PRESERVE THESE MARKINGS.
- Steve 1/26/90*

(3) WATER USE AND WELL DATA

Proposed maximum pumping rate (gpm) 6
 Average annual amount of ground water to be appropriated (acre-feet): 9
 Number of acres to be irrigated: 3
 Proposed total depth (feet): 580
 Aquifer ground water is to be obtained from: _____
 Owner's well designation Blanca Well No. 58

GROUND WATER TO BE USED FOR:

- HOUSEHOLD USE ONLY - no irrigation (0)
 DOMESTIC (1) INDUSTRIAL (5)
 LIVESTOCK (2) IRRIGATION (6)
 COMMERCIAL (4) MUNICIPAL (8)
 OTHER (9) See Exhibit A
 DETAIL THE USE ON BACK IN (11)

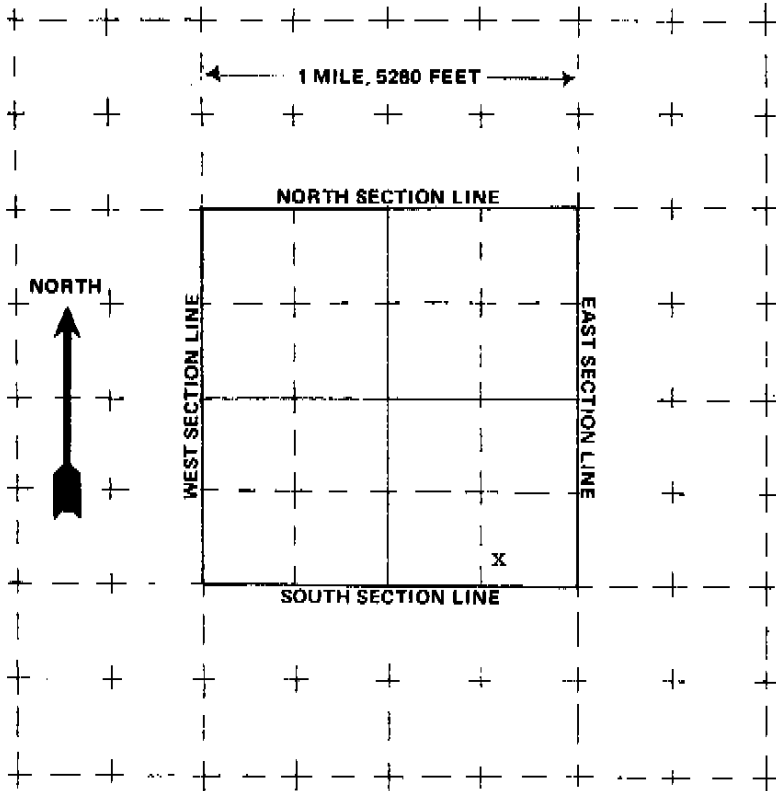
APPLICATION APPROVED

PERMIT NUMBER 036195 - F
 DATE ISSUED JAN 26 1990
 EXPIRATION DATE JAN 26 1991
 BY Steve Lautenschlager
(STATE ENGINEER)
 I.D. 3-35 COUNTY 02

(4) DRILLER

Name Bureau of Land Management
 Street 3170 East Main
 City Canon City CO 81212
(State) (Zip)
 Telephone No. 719-275-0631 Lic. No. _____

(5) **THE LOCATION OF THE PROPOSED WELL** and the area on which the water will be used must be indicated on the diagram below. Use the CENTER SECTION (1 section, 640 acres) for the well location.



The scale of the diagram is 2 inches = 1 mile
Each small square represents 40 acres.

WATER EQUIVALENTS TABLE (Rounded Figures)

An acre-foot covers 1 acre of land 1 foot deep
1 cubic foot per second (cfs) . . . 449 gallons per minute (gpm)
A family of 5 will require approximately 1 acre-foot of water per year.
1 acre-foot . . . 43,560 cubic feet . . . 325,900 gallons.
1,000 gpm pumped continuously for one day produces 4.42 acre-feet.

(6) **THE WELL MUST BE LOCATED BELOW** by distances from section lines.

650 ft. from South sec. line
(north or south)

1,050 ft. from East sec. line
(east or west)

LOT _____ BLOCK _____ FILING # _____

SUBDIVISION _____

(7) **TRACT ON WHICH WELL WILL BE LOCATED** Owner: BLM

No. of acres 5380. Will this be the only well on this tract? No

(8) **PROPOSED CASING PROGRAM**

Plain Casing

2 1/2 in. from 0 ft. to 360 ft.

Perforated casing

2 1/2 in. from 360 ft. to 580 ft.

(9) **FOR REPLACEMENT WELLS** give distance and direction from old well and plans for plugging it:

(10) **LAND ON WHICH GROUND WATER WILL BE USED:**

Owner(s): Bureau of Land Management No. of acres: 5380

Legal description: See Exhibit B, Blanca WHA Map

(11) **DETAILED DESCRIPTION** of the use of ground water: Household use and domestic wells must indicate type of disposal system to be used.

See Exhibit A, Other Uses of Ground Water

(12) **OTHER WATER RIGHTS** used on this land, including wells. Give Registration and Water Court Case Numbers.

Type or right	Used for (purpose)	Description of land on which used
None		

(13) **THE APPLICANT(S) STATE(S) THAT THE INFORMATION SET FORTH HEREON IS TRUE TO THE BEST OF HIS KNOWLEDGE.**

[Handwritten Signature]
SIGNATURE OF APPLICANT(S)

ASSOCIATE
District Manager

Use additional sheets of paper if more space is required.

RECEIVED

NOV 16 '89

WATER RESOURCES
STATE ENGINEER
COLO.

EXHIBIT A

Detailed Description of the Use of Groundwater

Applicant has constructed and plans to construct a system of ponds, marshes, and grain fields necessary to operate the Blanca Wildlife Habitat Area. Water retention is provided by a series of dikes fed by wells year-around.

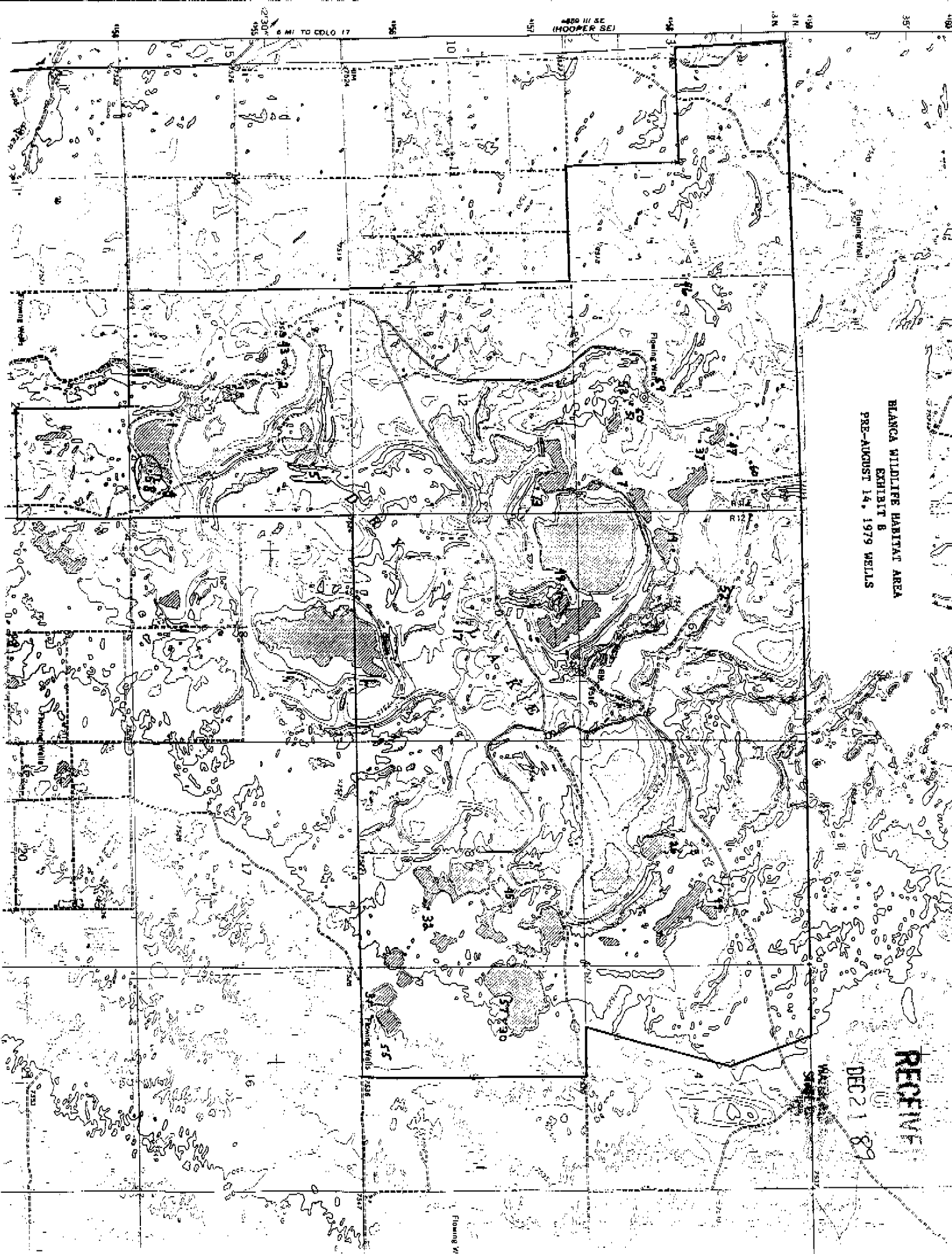
The Blanca Wildlife Habitat Area was at one time a shallow lake. The system of dikes is implanted in the dry lake bed. The dikes are earthen, from 10 to 12 feet in height, and of a length which varies with the size of the pond.

The ponds are utilized by nesting and migrating water fowl, shore birds, and wading birds. Peak water fowl populations occur at the area during the spring migration from March 15 to May 15. The nesting season runs from April 1 to May 15 for Canada geese and from May 15 to July 15 for ducks.

The project includes permanent ponds of various sizes. Numerous small ponds provide the necessary territorial spacing during nesting season, but a few large ponds are important for brood rearing, molting, and as a refuge during migration.

The ponds are also used for fishing. They have been stocked with various kinds of trout and other sport fish.

The ponds feed adjacent marshes with programmed spillage. Tall, dense, wet meadows mixed with greasewood, provide optimum nesting cover. Interspersed emergents and dense shore line vegetation are important for brood rearing and molting. The marshes and grain fields now irrigated encompass 586 acres. The ponds and dikes also provide stockwater for the Blanca Wildlife Area grazing allotment.



BLANCA WILDLIFE HABITAT AREA
EXHIBIT B
PRE-AUGUST 14, 1979 WELLS

RECEIVED
DEC 21 1979